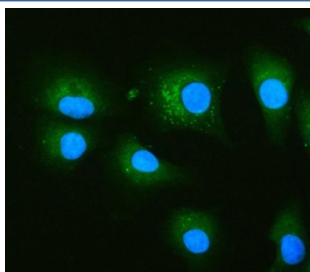


Glucosidase 2 subunit beta Antibody / PRKCSH (RQ8021)

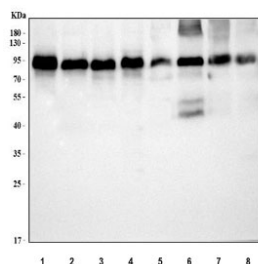
Catalog No.	Formulation	Size
RQ8021	0.5mg/ml if reconstituted with 0.2ml sterile DI water	100 ug

Bulk quote request

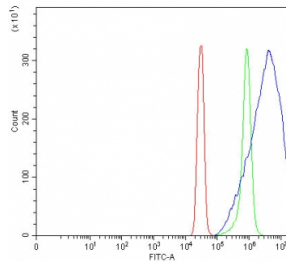
Availability	1-3 business days
Species Reactivity	Human
Format	Antigen affinity purified
Clonality	Polyclonal (rabbit origin)
Isotype	Rabbit IgG
Purity	Antigen affinity purified
Buffer	Lyophilized from 1X PBS with 2% Trehalose
UniProt	P14314
Applications	Western Blot : 0.5-1ug/ml Flow Cytometry : 1-3ug/million cells Immunofluorescence : 5ug/ml Direct ELISA : 0.1-0.5ug/ml
Limitations	This Glucosidase 2 subunit beta antibody is available for research use only.



Immunofluorescent staining of FFPE human A549 cells with Glucosidase 2 subunit beta antibody (green) and DAPI nuclear stain (blue). HIER: steam section in pH6 citrate buffer for 20 min.



Western blot testing of 1) human HeLa, 2) human 293T, 3) human Daudi, 4) human HEL, 5) rat liver, 6) rat L6, 7) mouse liver and 8) mouse C2C12 cell lysate with Glucosidase 2 subunit beta antibody. Predicted molecular weight ~59 kDa but may be observed at higher molecular weights due to glycosylation.



Flow cytometry testing of fixed and permeabilized human SiHa cells with Glucosidase 2 subunit beta antibody at 1ug/million cells (blocked with goat sera); Red=cells alone, Green=isotype control, Blue= Glucosidase 2 subunit beta antibody.

Description

Glucosidase 2 subunit beta is an enzyme that in humans is encoded by the PRKCSH gene. This gene encodes the beta-subunit of glucosidase II, an N-linked glycan-processing enzyme in the endoplasmic reticulum. The encoded protein is an acidic phosphoprotein known to be a substrate for protein kinase C. Mutations in this gene have been associated with the autosomal dominant polycystic liver disease. Alternative splicing results in multiple transcript variants.

Application Notes

Optimal dilution of the Glucosidase 2 subunit beta antibody should be determined by the researcher.

Immunogen

E. coli-derived recombinant human protein (amino acids E16-L506) was used as the immunogen for the Glucosidase 2 subunit beta antibody.

Storage

After reconstitution, the Glucosidase 2 subunit beta antibody can be stored for up to one month at 4oC. For long-term, aliquot and store at -20oC. Avoid repeated freezing and thawing.