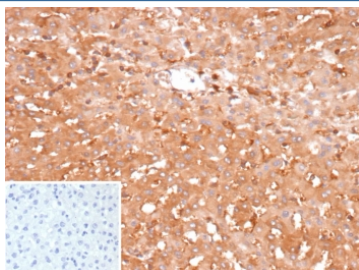


## Glucose-6-phosphate isomerase Antibody / GPI [clone GPI/2439] (V5718)

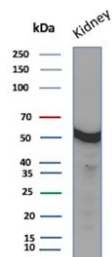
Catalog No.	Formulation	Size
V5718-100UG	0.2 mg/ml in 1X PBS with 0.1 mg/ml BSA (US sourced), 0.05% sodium azide	100 ug
V5718-20UG	0.2 mg/ml in 1X PBS with 0.1 mg/ml BSA (US sourced), 0.05% sodium azide	20 ug
V5718SAF-100UG	1 mg/ml in 1X PBS; BSA free, sodium azide free	100 ug

[Bulk quote request](#)

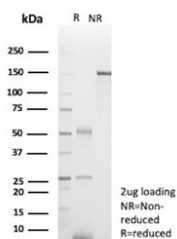
<b>Availability</b>	1-3 business days
<b>Species Reactivity</b>	Human
<b>Format</b>	Purified
<b>Clonality</b>	Monoclonal (mouse origin)
<b>Isotype</b>	Mouse IgG2b, kappa
<b>Clone Name</b>	GPI/2439
<b>Purity</b>	Protein G affinity
<b>UniProt</b>	P06744
<b>Localization</b>	Cytoplasm
<b>Applications</b>	Immunohistochemistry (FFPE) : 1-2ug/ml Western Blot : 2-4ug/ml
<b>Limitations</b>	This Glucose-6-phosphate isomerase antibody is available for research use only.



IHC staining of FFPE human hepatocellular carcinoma tissue with Glucose-6-phosphate isomerase antibody (clone GPI/2439). Inset: PBS used in place of primary Ab (secondary Ab negative control). HIER: boil tissue sections in pH 9 10mM Tris with 1mM EDTA for 20 min and allow to cool before testing.



Western blot testing of human kidney tissue with Glucose-6-phosphate isomerase antibody (clone GPI/2439). Predicted molecular weight ~63 kDa.



SDS-PAGE analysis of purified, BSA-free Glucose-6-phosphate isomerase antibody (clone GPI/2439) as confirmation of integrity and purity.

## Description

Besides its role as a glycolytic enzyme, mammalian GPI can function as a tumor-secreted cytokine and an angiogenic factor (AMF) that stimulates endothelial cell motility. GPI is also a neurotrophic factor (Neuroleukin) for spinal and sensory neurons. Defects in GPI are the cause of hemolytic anemia non-spherocytic due to glucose phosphate isomerase deficiency.

## Application Notes

Optimal dilution of the Glucose-6-phosphate isomerase antibody should be determined by the researcher.

## Immunogen

A recombinant human full-length GPI protein was used as the immunogen for the Glucose-6-phosphate isomerase antibody.

## Storage

Aliquot the Glucose-6-phosphate isomerase antibody and store frozen at -20°C or colder. Avoid repeated freeze-thaw cycles.