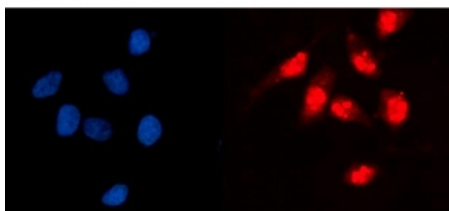


Glucokinase Regulator Antibody / GCKR (RQ6555)

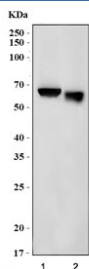
Catalog No.	Formulation	Size
RQ6555	0.5mg/ml if reconstituted with 0.2ml sterile DI water	100 ug

Bulk quote request

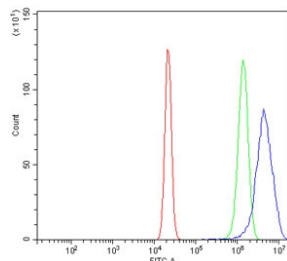
Availability	1-3 business days
Species Reactivity	Human, Mouse, Rat
Format	Antigen affinity purified
Clonality	Polyclonal (rabbit origin)
Isotype	Rabbit IgG
Purity	Affinity purified
Buffer	Lyophilized from 1X PBS with 2% Trehalose
UniProt	Q14397
Localization	Cytoplasmic, nuclear
Applications	Western Blot : 1-2ug/ml Immunohistochemistry (FFPE) : 2-5ug/ml Immunofluorescence : 5ug/ml Direct ELISA : 0.1-0.5ug/ml
Limitations	This Glucokinase Regulator antibody is available for research use only.



Immunofluorescent staining of FFPE human HeLa cells with Glucokinase Regulator antibody (red) and DAPI nuclear stain (blue). HIER: steam section in pH6 citrate buffer for 20 min.



Western blot testing of 1) rat liver and 2) mouse liver tissue lysate with Glucokinase Regulator antibody. Predicted molecular weight ~69 kDa.



Flow cytometry testing of human U-2 OS cells with Glucokinase Regulator antibody at 1ug/million cells (blocked with goat sera); Red=cells alone, Green=isotype control, Blue= Glucokinase Regulator antibody.

Description

The glucokinase regulatory protein (GKRP) also known as glucokinase (hexokinase 4) regulator (GCKR) is a protein produced in hepatocytes (liver cells). This gene encodes a protein belonging to the GCKR subfamily of the SIS (Sugar ISomerase) family of proteins. The gene product is a regulatory protein that inhibits glucokinase in liver and pancreatic islet cells by binding non-covalently to form an inactive complex with the enzyme. This gene is considered a susceptibility gene candidate for a form of maturity-onset diabetes of the young (MODY).

Application Notes

Optimal dilution of the Glucokinase Regulator antibody should be determined by the researcher.

Immunogen

An E. coli-derived human protein (amino acids Q8-Q569) was used as the immunogen for the Glucokinase Regulator antibody.

Storage

After reconstitution, the Glucokinase Regulator antibody can be stored for up to one month at 4oC. For long-term, aliquot and store at -20oC. Avoid repeated freezing and thawing.