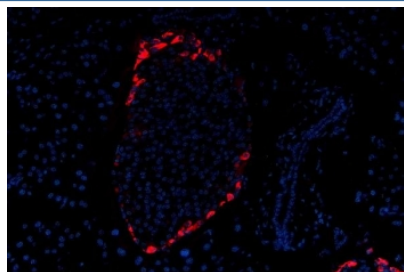


## Glucagon Antibody [clone K79bB10] (R30040)

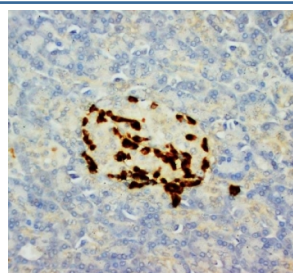
Catalog No.	Formulation	Size
R30040	0.5mg/ml with 1% BSA and 0.01% sodium azide if reconstituted with 0.2ml sterile 1X PBS	100 ug

### Bulk quote request

Availability	1-3 business days
Species Reactivity	Human, Mouse, Rat, Rabbit
Format	Ascites
Clonality	Monoclonal (mouse origin)
Isotype	Mouse IgG1
Clone Name	K79bB10
Purity	Ascites
Gene ID	2641
Localization	Cytoplasmic
Applications	Immunohistochemistry (FFPE) : 1-2ug/ml Immunofluorescence : 5ug/ml
Limitations	This Glucagon antibody is available for research use only.



Immunofluorescent staining of FFPE mouse pancreas tissue with Glucagon antibody (red) and DAPI nuclear stain (blue). HIER: steam section in pH6 citrate buffer for 20 min.



IHC-P: Glucagon antibody testing of rat pancreas tissue. HIER: steamed with pH6 citrate buffer, HRP-staining.

## Description

Glucagon is a member of a multigene family that includes secretin. Mature, it is a 29-amino acid pancreatic hormone that counteracts the glucose-lowering action of insulin by stimulating glycogenolysis and gluconeogenesis. The human gene is approximately 9.4 kb long and contains 6 exons and 5 introns, and assigned to 2q36-2q37.

## Application Notes

The stated application concentrations are suggested starting amounts. Titration of the Glucagon antibody may be required due to differences in protocols and secondary/substrate sensitivity.

## Immunogen

Polymerized porcine glucagon was used as the immunogen for this Glucagon antibody.

## Storage

After reconstitution, the Glucagon antibody can be stored for up to one month at 4°C. For long-term, aliquot and store at -20°C. Avoid repeated freezing and thawing.