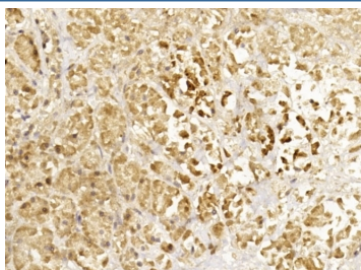


Glucagon Antibody (F54303)

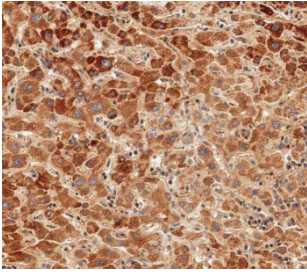
Catalog No.	Formulation	Size
F54303-0.4ML	In 1X PBS, pH 7.4, with 0.09% sodium azide	0.4 ml
F54303-0.08ML	In 1X PBS, pH 7.4, with 0.09% sodium azide	0.08 ml

Bulk quote request

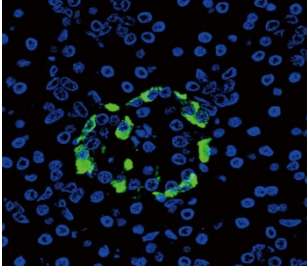
Availability	1-3 business days
Species Reactivity	Human
Format	Purified
Host	Rabbit
Clonality	Polyclonal (rabbit origin)
Isotype	Rabbit Ig
Purity	Antigen affinity purified
UniProt	P01275
Applications	Western Blot : 1:500-1:2000 Immunohistochemistry (FFPE) : 1:25 Immunofluorescence : 1:25 Flow Cytometry : 1:25 (1x10e6 cells)
Limitations	This Glucagon antibody is available for research use only.



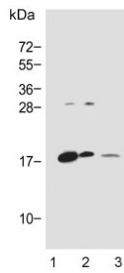
IHC testing of FFPE human pancreas tissue with Glucagon antibody. HIER: steam section in pH6 citrate buffer for 20 min and allow to cool prior to staining.



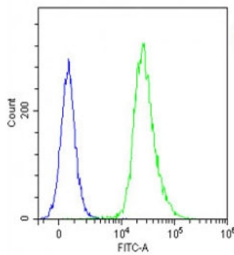
IHC testing of FFPE human liver tissue with Glucagon antibody. HIER: steam section in pH9 EDTA for 20 min and allow to cool prior to staining.



Immunofluorescent staining of FFPE human pancreas with Glucagon antibody (green) and DAPI nuclear stain (blue).



Western blot testing of human 1) PANC1, 2) brain and 3) Jurkat lysate with Glucagon antibody. Predicted molecular weight ~21 kDa (pro form).



Flow cytometry testing of fixed and permeabilized human Jurkat cells with Glucagon antibody; Blue=isotype control, Green= Glucagon antibody.

Description

Glucagon is actually a preproprotein that is cleaved into four distinct mature peptides. One of these, glucagon, is a pancreatic hormone that counteracts the glucose-lowering action of insulin by stimulating glycogenolysis and gluconeogenesis. Glucagon is a ligand for a specific G-protein linked receptor whose signalling pathway controls cell proliferation. Two of the other peptides are secreted from gut endocrine cells and promote nutrient absorption through distinct mechanisms. Finally, the fourth peptide is similar to glicentin, an active enteroglucagon.

Application Notes

The stated application concentrations are suggested starting points. Titration of the Glucagon antibody may be required due to differences in protocols and secondary/substrate sensitivity.

Immunogen

A portion of amino acids 119-148 from the human protein were used as the immunogen for the Glucagon antibody.

Storage

Aliquot the Glucagon antibody and store frozen at -20°C or colder. Avoid repeated freeze-thaw cycles.

