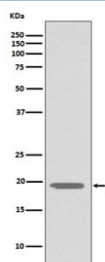


Glucagon Antibody [clone AOAF-7] (RQ4966)

Catalog No.	Formulation	Size
RQ4966	Antibody in PBS with 0.02% sodium azide, 50% glycerol and 0.4-0.5mg/ml BSA	100 ul

[Bulk quote request](#)

Availability	1-2 weeks
Species Reactivity	Human
Format	Purified
Clonality	Rabbit Monoclonal
Isotype	Rabbit IgG
Clone Name	AOAF-7
Purity	Affinity purified
UniProt	P01275
Applications	Western Blot : 1:500-1:2000
Limitations	This Glucagon antibody is available for research use only.



Western blot testing of human HepG2 cell lysate with Glucagon antibody. Predicted molecular weight ~21 kDa (pro form).

Description

The pancreas releases glucagon when the concentration of insulin (and indirectly glucose) in the bloodstream falls too low. Glucagon causes the liver to convert stored glycogen into glucose, which is released into the bloodstream. [Wiki]

Application Notes

Optimal dilution of the Glucagon antibody should be determined by the researcher.

Immunogen

A synthetic peptide specific to human Glucagon was used as the immunogen for the Glucagon antibody.

Storage

Store the Glucagon antibody at -20oC.