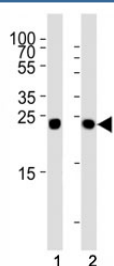


## Glucagon Antibody [clone 329CT36.10.10] (F40290)

Catalog No.	Formulation	Size
F40290-0.4ML	In 1X PBS, pH 7.4, with 0.09% sodium azide	0.4 ml
F40290-0.08ML	In 1X PBS, pH 7.4, with 0.09% sodium azide	0.08 ml

[Bulk quote request](#)

<b>Availability</b>	1-3 business days
<b>Species Reactivity</b>	Human
<b>Format</b>	Purified
<b>Clonality</b>	Monoclonal (mouse origin)
<b>Isotype</b>	Mouse IgG1, k
<b>Clone Name</b>	329CT36.10.10
<b>Purity</b>	Purified
<b>UniProt</b>	P01275
<b>Applications</b>	Western Blot : 1:1000
<b>Limitations</b>	This Glucagon antibody is available for research use only.



Western blot analysis of lysate from (1) HT29 and (2) HepG2 cell line using Glucagon antibody at 1:1000. Predicted molecular weight ~21 kDa (pro form).

## Description

The protein encoded by this gene is actually a preproprotein that is cleaved into four distinct mature peptides. One of these, glucagon, is a pancreatic hormone that counteracts the glucose-lowering action of insulin by stimulating glycogenolysis and gluconeogenesis. Glucagon is a ligand for a specific G-protein linked receptor whose signalling pathway controls cell proliferation. Two of the other peptides are secreted from gut endocrine cells and promote nutrient absorption through distinct mechanisms. Finally, the fourth peptide is similar to glicentin, an active enteroglucagon.

## Application Notes

Titration of the Glucagon antibody may be required due to differences in protocols and secondary/substrate sensitivity.

## **Immunogen**

A portion of amino acids 119-148 from the human protein was used as the immunogen for this Glucagon antibody.

## **Storage**

Aliquot the Glucagon antibody and store frozen at -20oC or colder. Avoid repeated freeze-thaw cycles.