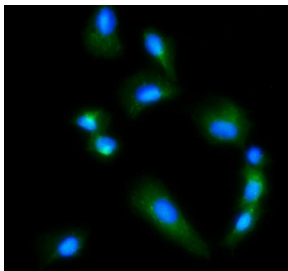


## GLS Antibody / Glutaminase (RQ5691)

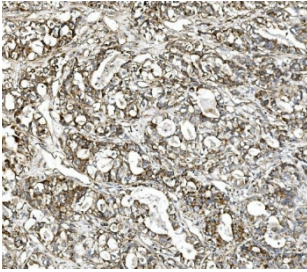
Catalog No.	Formulation	Size
RQ5691	0.5mg/ml if reconstituted with 0.2ml sterile DI water	100 ug

### Bulk quote request

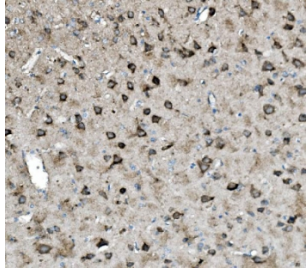
<b>Availability</b>	1-3 business days
<b>Species Reactivity</b>	Human, Mouse, Rat, Monkey
<b>Format</b>	Antigen affinity purified
<b>Host</b>	Rabbit
<b>Clonality</b>	Polyclonal
<b>Isotype</b>	Rabbit IgG
<b>Purity</b>	Affinity purified
<b>Buffer</b>	Lyophilized from 1X PBS with 2% Trehalose and 0.025% sodium azide
<b>UniProt</b>	O94925
<b>Applications</b>	Western Blot : 0.5-1ug/ml Immunohistochemistry : 1-2ug/ml Immunofluorescence : 2-4ug/ml Flow Cytometry : 1-3ug/million cells Direct ELISA : 0.1-0.5ug/ml
<b>Limitations</b>	This GLS antibody is available for research use only.



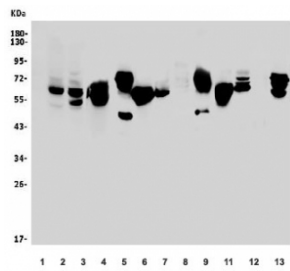
Immunofluorescent staining of FFPE human U-2 OS cells with GLS antibody (green) and DAPI nuclear stain (blue). HIER: steam section in pH6 citrate buffer for 20 min.



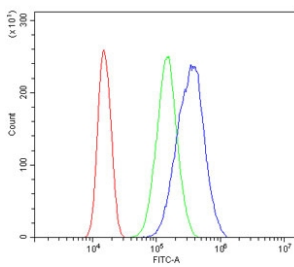
IHC staining of FFPE human stomach cancer with GLS antibody. HIER: boil tissue sections in pH8 EDTA for 20 min and allow to cool before testing.



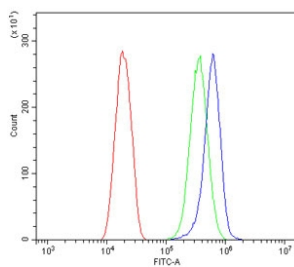
IHC staining of FFPE rat brain with GLS antibody. HIER: boil tissue sections in pH8 EDTA for 20 min and allow to cool before testing.



Western blot testing of 1) human placenta, 2) human U-87 MG, 3) human HeLa, 4) monkey kidney, 5) rat brain, 6) rat kidney, 7) rat heart, 8) rat skeletal muscle, 9) mouse brain, 10) mouse kidney, 11) mouse heart, 12) mouse skeletal muscle and 13) mouse Neuro-2a antibody. Predicted molecular weight: 65-73 kDa.



Flow cytometry testing of human 293T cells with GLS antibody at 1ug/million cells (blocked with goat sera); Red=cells alone, Green=isotype control, Blue= GLS antibody.



Flow cytometry testing of human SiHa cells with GLS antibody at 1ug/million cells (blocked with goat sera); Red=cells alone, Green=isotype control, Blue= GLS antibody.

## Description

This gene encodes the K-type mitochondrial glutaminase. The encoded protein is a phosphate-activated amidohydrolase that catalyzes the hydrolysis of glutamine to glutamate and ammonia. This protein is primarily expressed in the brain and kidney and plays an essential role in generating energy for metabolism, synthesizing the brain neurotransmitter glutamate and maintaining acid-base balance in the kidney. Alternate splicing results in multiple transcript variants.

## Application Notes

Optimal dilution of the GLS antibody should be determined by the researcher.

## Immunogen

Recombinant human protein (amino acids K396-N654) was used as the immunogen for the GLS antibody.

## Storage

After reconstitution, the GLS antibody can be stored for up to one month at 4°C. For long-term, aliquot and store at -20°C. Avoid repeated freezing and thawing.