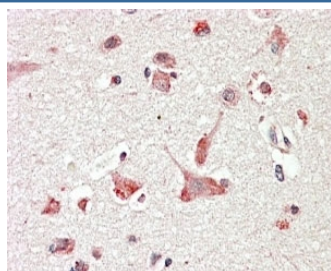


GLP Antibody (R33540)

Catalog No.	Formulation	Size
R33540-100UG	0.5 mg/ml in 1X TBS, pH7.3, with 0.5% BSA (US sourced) and 0.02% sodium azide	100 ug

[Bulk quote request](#)

Availability	1-3 business days
Species Reactivity	Human
Format	Antigen affinity purified
Host	Goat
Clonality	Polyclonal (goat origin)
Isotype	Goat Ig
Purity	Antigen affinity
Gene ID	55889; 342096
Applications	Immunohistochemistry (FFPE) : 3-6ug/ml ELISA (peptide) LOD : 1:1000
Limitations	This GLP antibody is available for research use only.



IHC testing of FFPE human cerebral cortex with GLP antibody at 4ug/ml. HIER: steamed with pH6 citrate buffer, AP-staining.

Description

Additional name(s) for this target protein: Golgi autoantigen, golgin subfamily a, member 6; Golgin linked to PML; GOLGA6A/B

Application Notes

Optimal dilution of the GLP antibody should be determined by the researcher.

Immunogen

Amino acids DLPKEKADGTEQ were used as the immunogen for this GLP antibody.

Storage

Aliquot and store the GLP antibody at -20oC.