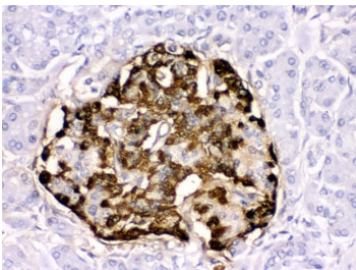


GLP-1 Antibody / Glucagon-like peptide 1 (R31865)

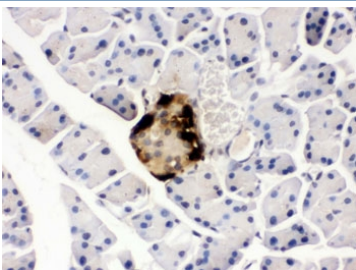
Catalog No.	Formulation	Size
R31865	0.5mg/ml if reconstituted with 0.2ml sterile DI water	100 ug

[Bulk quote request](#)

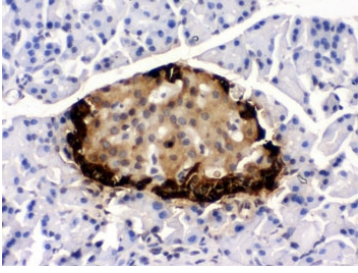
Availability	1-3 business days
Species Reactivity	Human, Mouse, Rat
Format	Antigen affinity purified
Host	Rabbit
Clonality	Polyclonal (rabbit origin)
Isotype	Rabbit IgG
Purity	Antigen affinity
Buffer	Lyophilized from 1X PBS with 2.5% BSA and 0.025% sodium azide
UniProt	P01275
Localization	Cytoplasmic
Applications	Immunohistochemistry (FFPE) : 0.5-1ug/ml Immunofluorescence : 1-2ug/ml
Limitations	This GLP-1 antibody is available for research use only.



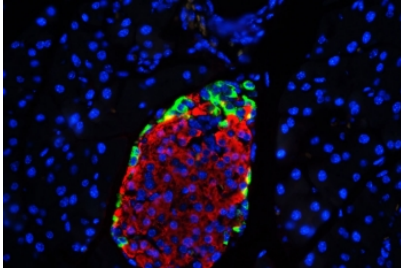
IHC testing of human pancreatic cancer tissue with GLP-1 antibody. HIER: Boil the paraffin sections in pH 6, 10mM citrate buffer for 20 minutes and allow to cool prior to staining.



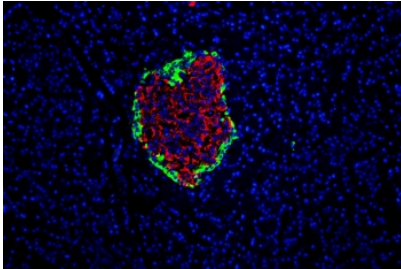
IHC testing of mouse pancreas with GLP-1 antibody. HIER: Boil the paraffin sections in pH 6, 10mM citrate buffer for 20 minutes and allow to cool prior to staining.



IHC testing of rat pancreas with GLP-1 antibody. HIER: Boil the paraffin sections in pH 6, 10mM citrate buffer for 20 minutes and allow to cool prior to staining.



Immunofluorescent staining of mouse pancreas with GLP-1 antibody (green) at 1ug/ml and DAPI nuclear stain (blue). HIER: Boil the paraffin sections in pH 6, 10mM citrate buffer for 20 minutes and allow to cool prior to staining.



Immunofluorescent staining of rat pancreas with GLP-1 antibody (green) at 1ug/ml and DAPI nuclear stain (blue). HIER: Boil the paraffin sections in pH 6, 10mM citrate buffer for 20 minutes and allow to cool prior to staining.

Description

GLP1, also known as 7-37 for the codons of the preproglucagon molecule which encode it, renders pancreatic beta-cells 'glucose-competent' and may be useful in the treatment of noninsulin-dependent diabetes mellitus. Also, GLP1 is a potent insulin secretagogue. It plays a major role in the enteroinsular axis, accounting, for example, for the finding that plasma insulin levels accompanying oral intake of glucose are greater than those observed when glucose is given intravenously.

Application Notes

Optimal dilution of the GLP-1 antibody should be determined by the researcher.

Immunogen

Amino acids HSQGTFTSDYSKYLDSSRAQDFVQWLMNT of human Glucagon-like peptide 1 were used as the immunogen for the GLP-1 antibody.

Storage

After reconstitution, the GLP-1 antibody can be stored for up to one month at 4oC. For long-term, aliquot and store at -20oC. Avoid repeated freezing and thawing.

