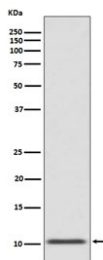


## GLP-1 Antibody / Glucagon-like peptide 1 [clone AOHH-7] (RQ4965)

Catalog No.	Formulation	Size
RQ4965	Antibody in PBS with 0.02% sodium azide, 50% glycerol and 0.4-0.5mg/ml BSA	100 ul

[Bulk quote request](#)

<b>Availability</b>	1-2 weeks
<b>Species Reactivity</b>	Human
<b>Format</b>	Purified
<b>Host</b>	Rabbit
<b>Clonality</b>	Rabbit Monoclonal
<b>Isotype</b>	Rabbit IgG
<b>Clone Name</b>	AOHH-7
<b>Purity</b>	Affinity purified
<b>UniProt</b>	P01275
<b>Applications</b>	Western Blot : 1:1000-1:5000
<b>Limitations</b>	This GLP-1 antibody is available for research use only.



Western blot testing of human fetal pancreas with GLP-1 antibody. Predicted molecular weight ~3 kDa but can be observed at up to ~21 kDa depending on Proglucagon cleavage.

### Description

Glucagon-like peptide-1 (GLP-1) is a 30 amino acid long peptide hormone deriving from the tissue-specific posttranslational processing of the proglucagon peptide. It is produced and secreted by intestinal enteroendocrine L-cells and certain neurons within the nucleus of the solitary tract in the brainstem upon food consumption. The initial product GLP-1 (1-37) is susceptible to amidation and proteolytic cleavage which gives rise to the two truncated and equipotent biologically active forms, GLP-1 (7-36) amide and GLP-1 (7-37). Active GLP-1 composes two alpha-helices from amino acid position 13-20 and 24-35 separated by a linker region. [Wiki]

## **Application Notes**

Optimal dilution of the GLP-1 antibody should be determined by the researcher.

## **Immunogen**

A synthetic peptide specific to human Glucagon-like peptide 1 was used as the immunogen for the GLP-1 antibody.

## **Storage**

Store the GLP-1 antibody at -20oC.