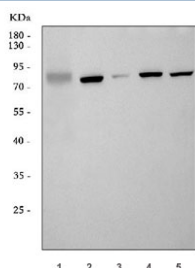


## GLIS3 Antibody / GLI-similar 3 / ZNF515 (RQ7338)

Catalog No.	Formulation	Size
RQ7338	0.5mg/ml if reconstituted with 0.2ml sterile DI water	100 ug

**Bulk quote request**

<b>Availability</b>	1-3 business days
<b>Species Reactivity</b>	Human, Mouse, Rat
<b>Format</b>	Antigen affinity purified
<b>Clonality</b>	Polyclonal (rabbit origin)
<b>Isotype</b>	Rabbit IgG
<b>Purity</b>	Antigen affinity purified
<b>Buffer</b>	Lyophilized from 1X PBS with 2% Trehalose
<b>UniProt</b>	Q8NEA6
<b>Applications</b>	Western Blot : 0.5-1ug/ml Direct ELISA : 0.1-0.5ug/ml
<b>Limitations</b>	This GLIS3 antibody is available for research use only.



Western blot testing of 1) human A549, 2) rat kidney, 3) rat brain, 4) mouse kidney and 5) mouse brain tissue lysate with GLIS3 antibody. Predicted molecular weight ~84 kDa.

## Description

Zinc finger protein GLI3 is a protein that in humans is encoded by the GLI3 gene. This gene is a member of the GLI-similar zinc finger protein family and encodes a nuclear protein with five C2H2-type zinc finger domains. This protein functions as both a repressor and activator of transcription and is specifically involved in the development of pancreatic beta cells, the thyroid, eye, liver and kidney. Mutations in this gene have been associated with neonatal diabetes and congenital hypothyroidism (NDH). Alternatively spliced variants that encode different protein isoforms have been described but the full-length nature of only two have been determined.

## Application Notes

Optimal dilution of the GLIS3 antibody should be determined by the researcher.

## Immunogen

Recombinant human protein (amino acids A184-P765) was used as the immunogen for the GLIS3 antibody.

## Storage

After reconstitution, the GLIS3 antibody can be stored for up to one month at 4oC. For long-term, aliquot and store at -20oC. Avoid repeated freezing and thawing.