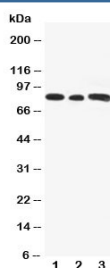


Gli3 Antibody (R30859)

Catalog No.	Formulation	Size
R30859	0.5mg/ml if reconstituted with 0.2ml sterile DI water	100 ug

Bulk quote request

Availability	1-3 business days
Species Reactivity	Human, Mouse, Rat
Format	Antigen affinity purified
Clonality	Polyclonal (rabbit origin)
Isotype	Rabbit IgG
Purity	Antigen affinity
Buffer	Lyophilized from 1X PBS with 2.5% BSA and 0.025% sodium azide/thimerosal
UniProt	P10071
Applications	Western Blot : 0.5-1ug/ml (1)
Limitations	This Gli3 antibody is available for research use only.



Western blot testing of Gli3 antibody and Lane 1: rat testis; 2: human A549; 3: (h) SW620 cell lysate

Description

Gli-kruppel family member 3 is a member of the zinc finger family related to Kruppel, a protein family that is known to regulate development in *Drosophila*. The gene is expressed as an 8.5-kb mRNA in tissues such as testis, myometrium, placenta, and lung, and the protein product (relative molecular mass, 190,000D) shows sequence-specific DNA binding. Gli3 is homologous to the *Drosophila cubitus interruptus (ci)* gene product(Ci), which regulates the Patched (pct), Gooseberry (gsb), and Decapentaplegic (dpp) genes. PKA-dependent processing of vertebrate Gli3 in developing limb generates a potent repressor in a manner antagonized by apparent long-range signaling from posteriorly localized Sonic hedgehog protein. The high relative abundance and potency of Gli3 repressor suggested specialization of the protein and its products for negative hedgehog pathway regulation.

Application Notes

The stated application concentrations are suggested starting amounts. Titration of the Gli3 antibody may be required due to differences in protocols and secondary/substrate sensitivity.

1. There are two isoforms of Gli-kruppel family member 3: the 170-190KD full length form and a truncated ~80KD form. This antibody will detect both, depending on the testing material.

Immunogen

An amino acid sequence from the N-terminus of human Gli-kruppel family member 3 (SNEDESPGQTYHRERRNA) was used as the immunogen for this Gli3 antibody.

Storage

After reconstitution, the Gli3 antibody can be stored for up to one month at 4oC. For long-term, aliquot and store at -20oC. Avoid repeated freezing and thawing.