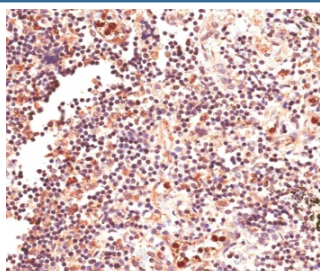


GLI2 Antibody (R36484)

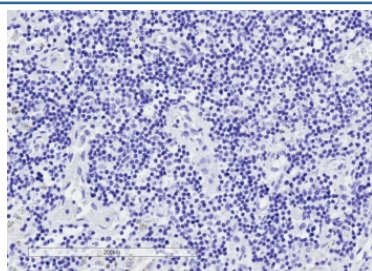
Catalog No.	Formulation	Size
R36484-100UG	0.5 mg/ml in 1X TBS, pH7.3, with 0.5% BSA (US sourced) and 0.02% sodium azide	100 ug

[Bulk quote request](#)

Availability	1-3 business days
Species Reactivity	Human, Mouse
Format	Antigen affinity purified
Clonality	Polyclonal (goat origin)
Isotype	Goat Ig
Purity	Antigen affinity
UniProt	P10070
Localization	Cytoplasmic, nuclear
Applications	IHC (FFPE) : 4-6ug/ml ELISA (peptide) LOD : 1:16000
Limitations	This GLI2 antibody is available for research use only.



IHC testing of FFPE human lymph node tissue with GLI2 antibody at 4ug/ml. HIER: steam section in pH6 citrate buffer for 20 min.



IHC testing of FFPE human lymph node tissue without GLI2 antibody (negative control). HIER: steam section in pH6 citrate buffer for 20 min.

Description

Functions as transcription regulator in the hedgehog (Hh) pathway. [UniProt]

Application Notes

Optimal dilution of the GLI2 antibody should be determined by the researcher.

Immunogen

Amino acids DLKEDLDRDDCKQE were used as the immunogen for this GLI2 antibody.

Storage

Aliquot and store the GLI2 antibody at -20oC.