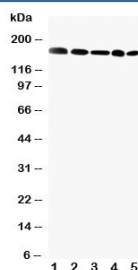


GLI2 Antibody (R31041)

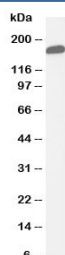
Catalog No.	Formulation	Size
R31041	0.5mg/ml if reconstituted with 0.2ml sterile DI water	100 ug

Bulk quote request

Availability	1-3 business days
Species Reactivity	Human
Format	Antigen affinity purified
Host	Rabbit
Clonality	Polyclonal (rabbit origin)
Isotype	Rabbit IgG
Purity	Antigen affinity
Buffer	Lyophilized from 1X PBS with 2.5% BSA and 0.025% sodium azide/thimerosal
UniProt	P10070
Applications	Western Blot : 0.5-1ug/ml
Limitations	This GLI2 antibody is available for research use only.



Western blot testing of GLI2 antibody and Lane 1: MCF-7; 2: HeLa; 3: SKOV; 4: HT1080; 5: A549 cell lysate. Predicted molecular weight: 86~168 kDa (multiple isoforms)(1).



Western blot testing of GLI2 antibody and human placenta tissue lysate. Expected/observed size ~168KD

Description

Gli-Kruppel Family Member 2 is a protein that in humans is encoded by the GLI2 gene. Sequencing of GLI cDNA clones showed the presence of 5 tandem zinc fingers connected by histidine-cysteine links, which indicated that the gene belongs to the family of zinc finger genes related to Kruppel(Kr). The Drosophila gene Kr is a member of the gap class of segmentation genes; thoracic and anterior abdominal segments fail to form in Kr mutant embryos. By fluorescence in situ hybridization, Matsumoto et al.(1996) refined the assignment of the GLI2 gene to chromosome 2q14. Roessler et al.(2005) showed that GLI2-delta-N exhibited potent transcriptional activity in vivo: overexpression in mouse skin led to the formation of hedgehog-independent epithelial downgrowths resembling basal cell carcinomas, which in humans are associated with constitutive hedgehog signaling.

Application Notes

The stated application concentrations are suggested starting amounts. Titration of the Gli2 antibody may be required due to differences in protocols and secondary/substrate sensitivity.

1. GLI2 exists as five alternatively spliced isoforms of 133 kDa (isoform 1), 132 (2), 88 (3), 86 (4) and 168 kDa (isoform 5).

Immunogen

An amino acid sequence from the C-terminus of human GLI-2 (MLYYYGQIHMYEQDGGLENL) was used as the immunogen for this GLI2 antibody.

Storage

After reconstitution, the GLI2 antibody can be stored for up to one month at 4oC. For long-term, aliquot and store at -20oC. Avoid repeated freezing and thawing.