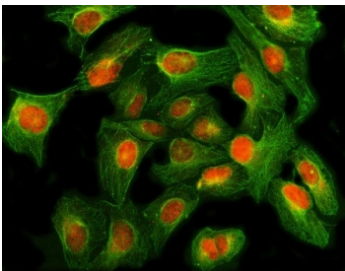


GLI2 Antibody / GLI family zinc finger protein 2 (RQ8264)

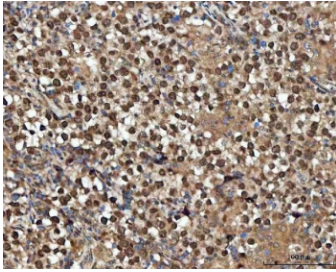
| Catalog No. | Formulation | Size |
|-------------|---|--------|
| RQ8264 | 0.5mg/ml if reconstituted with 0.2ml sterile DI water | 100 ug |

Bulk quote request

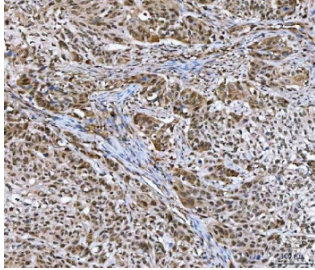
| | |
|---------------------------|---|
| Availability | 1-3 business days |
| Species Reactivity | Human, Rat |
| Format | Antigen affinity purified |
| Host | Rabbit |
| Clonality | Polyclonal |
| Isotype | Rabbit IgG |
| Purity | Antigen affinity purified |
| Buffer | Lyophilized from 1X PBS with 2% Trehalose |
| UniProt | P10070 |
| Localization | Cytoplasmic, nuclear |
| Applications | Western Blot : 0.5-1ug/ml Immunohistochemistry (FFPE) : 2-5ug/ml Immunofluorescence : 5ug/ml Flow Cytometry : 1-3ug/million cells Direct ELISA : 0.1-0.5ug/ml |
| Limitations | This GLI2 antibody is available for research use only. |



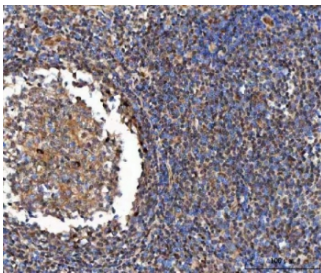
Immunofluorescent staining of FFPE human U-2 OS cells with GLI2 antibody (red) and Beta Tubulin mAb (green). HIERS: steam section in pH6 citrate buffer for 20 min.



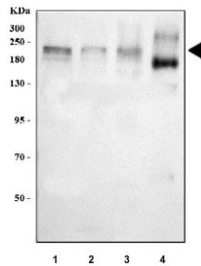
IHC staining of FFPE human testicular germ cell tumor tissue with GLI2 antibody. HIER: boil tissue sections in pH8 EDTA for 20 min and allow to cool before testing.



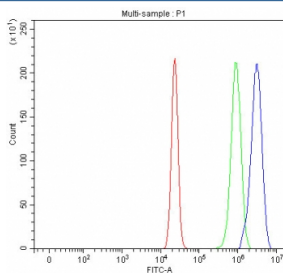
IHC staining of FFPE human esophageal squamous carcinoma tissue with GLI2 antibody. HIER: boil tissue sections in pH8 EDTA for 20 min and allow to cool before testing.



IHC staining of FFPE human tonsil tissue with GLI2 antibody. HIER: boil tissue sections in pH8 EDTA for 20 min and allow to cool before testing.



Western blot testing of 1) human 293T, 2) human A549, 3) human U-2 OS and 4) rat brain tissue lysate with GLI2 antibody. Predicted molecular weight: 86~168 kDa (multiple isoforms).



Flow cytometry testing of fixed and permeabilized human U-2 OS cells with GLI2 antibody at 1ug/million cells (blocked with goat sera); Red=cells alone, Green=isotype control, Blue= GLI2 antibody.

Description

GLI2 (Gli-Kruppel Family Member 2), also called ONCOGENE GLI2, is a protein that in humans is encoded by the GLI2 gene. Sequencing of GLI cDNA clones showed the presence of 5 tandem zinc fingers connected by histidine-cysteine links, which indicated that the gene belongs to the family of zinc finger genes related to Kruppel (Kr). The Drosophila gene Kr is a member of the gap class of segmentation genes; thoracic and anterior abdominal segments fail to form in Kr mutant embryos. By fluorescence in situ hybridization, Matsumoto et al. (1996) refined the assignment of the GLI2 gene to chromosome 2q14. Roessler et al. (2005) showed that GLI2-delta-N exhibited potent transcriptional activity in vivo: overexpression in mouse skin led to the formation of hedgehog-independent epithelial downgrowths resembling basal cell carcinomas, which in humans are associated with constitutive hedgehog signaling.

Application Notes

Optimal dilution of the GLI2 antibody should be determined by the researcher.

Immunogen

An E.coli-derived human recombinant protein (A46-A1398) was used as the immunogen for the GLI2 antibody.

Storage

After reconstitution, the GLI2 antibody can be stored for up to one month at 4oC. For long-term, aliquot and store at -20oC. Avoid repeated freezing and thawing.