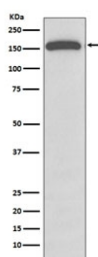


## GLI1 Antibody / Glioma associated oncogene 1 [clone GCG-7] (RQ5204)

Catalog No.	Formulation	Size
RQ5204	Antibody in PBS with 0.02% sodium azide, 50% glycerol and 0.4-0.5mg/ml BSA	100 ul

[Bulk quote request](#)

Availability	1-2 weeks
Species Reactivity	Human
Format	Purified
Clonality	Rabbit Monoclonal
Isotype	Rabbit IgG
Clone Name	GCG-7
Purity	Affinity purified
UniProt	P08151
Applications	Western Blot : 1:500-1:1000
Limitations	This GLI1 antibody is available for research use only.



Western blot testing of human A549 cell lysate with GLI1 antibody. Expected molecular weight: 100~160 kDa.

### Description

The GLI1 gene encodes a member of the Kruppel family of zinc finger proteins. The encoded transcription factor is activated by the sonic hedgehog signal transduction cascade and regulates stem cell proliferation. The activity and nuclear localization of this protein is negatively regulated by p53 in an inhibitory loop. [RefSeq]

### Application Notes

Optimal dilution of the GLI1 antibody should be determined by the researcher.

## **Immunogen**

A synthetic peptide specific to human Glioma associated oncogene 1 was used as the immunogen for the GLI1 antibody.

## **Storage**

Store the GLI1 antibody at -20oC.