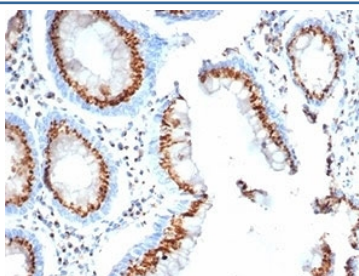


GLG1 Antibody / Golgi Glycoprotein 1 [clone GLG1/4830] (V4006)

Catalog No.	Formulation	Size
V4006-100UG	0.2 mg/ml in 1X PBS with 0.1 mg/ml BSA (US sourced), 0.05% sodium azide	100 ug
V4006-20UG	0.2 mg/ml in 1X PBS with 0.1 mg/ml BSA (US sourced), 0.05% sodium azide	20 ug
V4006SAF-100UG	1 mg/ml in 1X PBS; BSA free, sodium azide free	100 ug

[Bulk quote request](#)

Availability	1-3 business days
Species Reactivity	Human
Format	Purified
Clonality	Monoclonal (mouse origin)
Isotype	Mouse IgG2b, kappa
Clone Name	GLG1/4830
Purity	Protein A/G affinity
UniProt	Q92896
Localization	Golgi complex
Applications	Immunohistochemistry (Frozen & FFPE) : 0.5-1ug/ml (No special pretreatment is required for the immunohistochemical staining of formalin-fixed tissues)
Limitations	This GLG1 antibody is available for research use only.



IHC staining of FFPE human colon tissue with GLG1 antibody (clone GLG1/4830).

Description

This MAb recognizes a protein of 134kDa, which binds fibroblast growth factor and E-selectin (cell-adhesion lectin on endothelial cells mediating the binding of neutrophils). Fucosylation is essential for binding to E-selectin. It contains sialic acid residues and 16 Cys-rich GLG1 repeats. This MAb can be used to stain the Golgi complex in cell or tissue

preparations and can be used as a Golgi marker in subcellular fractions. It produces a diffuse staining pattern of the Golgi zone in normal and malignant cells. This MAb is an excellent marker for human cells in xenographic model research. It reacts specifically with human cells. The Golgi apparatus is an organelle present in all eukaryotic cells that forms a part of the endomembrane system. The primary function of the Golgi apparatus is to process and package macromolecules synthesized by the cell for exocytosis or use within the cell. The Golgi is made up of a stack of flattened, membrane-bound sacs known as cisternae, with three functional regions: the cis face, medial region and trans face. Each region consists of various enzymes that selectively modify the macromolecules passing through them, depending on where they are destined to reside. Several spherical vesicles that have budded off of the Golgi are present surrounding the main cisternae. The Golgi tends to be more pronounced and numerous in cells that make and secrete many substances such as plasma B cells.

Application Notes

Optimal dilution of the GLG1 antibody should be determined by the researcher.

Immunogen

Recombinant full-length human protein was used as the immunogen for the GLG1 antibody.

Storage

Aliquot the GLG1 antibody and store frozen at -20°C or colder. Avoid repeated freeze-thaw cycles.