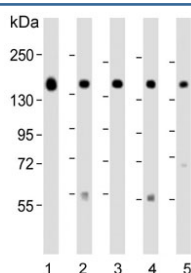


## GLG1 Antibody / Golgi (F54314)

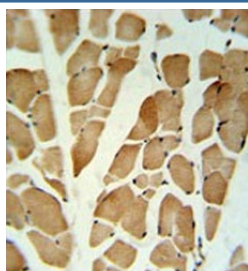
Catalog No.	Formulation	Size
F54314-0.4ML	In 1X PBS, pH 7.4, with 0.09% sodium azide	0.4 ml
F54314-0.08ML	In 1X PBS, pH 7.4, with 0.09% sodium azide	0.08 ml

**Bulk quote request**

<b>Availability</b>	1-3 business days
<b>Species Reactivity</b>	Human, Mouse
<b>Format</b>	Purified
<b>Clonality</b>	Polyclonal (rabbit origin)
<b>Isotype</b>	Rabbit Ig
<b>Purity</b>	Antigen affinity purified
<b>UniProt</b>	Q92896
<b>Applications</b>	Western Blot : 1:500-1:2000 Immunohistochemistry (FFPE) : 1:25
<b>Limitations</b>	This GLG1 antibody is available for research use only.



Western blot testing of human 1) MCF7, 2) HepG2, 3) T-47D, 4) mouse cerebellum and 5) human placenta lysate with GLG1 antibody. Predicted molecular weight ~135 kDa.



IHC testing of FFPE human skeletal muscle tissue with GLG1 antibody. HIER: steam section in pH6 citrate buffer for 20 min and allow to cool prior to staining.

## Description

Binds fibroblast growth factor and E-selectin (cell-adhesion lectin on endothelial cells mediating the binding of neutrophils). [UniProt]

## Application Notes

The stated application concentrations are suggested starting points. Titration of the GLG1 antibody may be required due to differences in protocols and secondary/substrate sensitivity.

## Immunogen

A portion of amino acids 1152-1179 from the human protein was used as the immunogen for the GLG1 antibody.

## Storage

Aliquot the GLG1 antibody and store frozen at -20oC or colder. Avoid repeated freeze-thaw cycles.