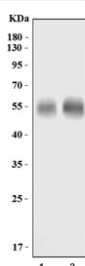


## GLAST Antibody / EAAT1 / SLC1A3 (R32423)

| Catalog No. | Formulation   | Size   |
|-------------|---|--------|
| R32423      | 0.5mg/ml if reconstituted with 0.2ml sterile DI water | 100 ug |

**Bulk quote request**

|                           |   |
|---------------------------|---|
| <b>Availability</b>       | 1-3 business days                                       |
| <b>Species Reactivity</b> | Mouse, Rat  |
| <b>Format</b>             | Antigen affinity purified                               |
| <b>Clonality</b>          | Polyclonal (rabbit origin)                              |
| <b>Isotype</b>            | Rabbit IgG  |
| <b>Purity</b>             | Antigen affinity  |
| <b>Buffer</b>             | Lyophilized from 1X PBS with 2% Trehalose               |
| <b>UniProt</b>            | P43003  |
| <b>Localization</b>       | Cytoplasmic, membranous                                 |
| <b>Applications</b>       | Western Blot : 0.5-1ug/ml                               |
| <b>Limitations</b>        | This GLAST antibody is available for research use only. |



Western blot testing of 1) rat brain and 2) mouse brain lysate with GLAST antibody.  
Predicted molecular weight: 55-60 kDa.

## Description

Solute carrier family 1 (glial high-affinity glutamate transporter), member 3, also known as SLC1A3, EAAT1 or GLAST, is a protein that in humans is encoded by the SLC1A3 gene. This gene is a member of high affinity glutamate transporter family. It is mapped to chromosome 5p13.2 by fluorescence in situ hybridization (FISH). And this gene transports L- glutamate and also L- and D-aspartate. It is essential for terminating the postsynaptic action of glutamate by rapidly removing released glutamate from the synaptic cleft. Furthermore, this gene acts as a symport by cotransporting sodium.

## Application Notes

Optimal dilution of the GLAST antibody should be determined by the researcher.

## Immunogen

Amino acids RMERFQQGVKRTLLAKKKVQNITKEDVK were used as the immunogen for the GLAST antibody.

## Storage

After reconstitution, the GLAST antibody can be stored for up to one month at 4°C. For long-term, aliquot and store at -20°C. Avoid repeated freezing and thawing.