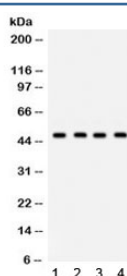


## GJC2 Antibody (R32259)

Catalog No.	Formulation	Size
R32259	0.5mg/ml if reconstituted with 0.2ml sterile DI water	100 ug

**Bulk quote request**

<b>Availability</b>	1-3 business days
<b>Species Reactivity</b>	Human, Mouse, Rat
<b>Format</b>	Antigen affinity purified
<b>Clonality</b>	Polyclonal (rabbit origin)
<b>Isotype</b>	Rabbit IgG
<b>Purity</b>	Antigen affinity
<b>Buffer</b>	Lyophilized from 1X PBS with 2.5% BSA and 0.025% sodium azide
<b>UniProt</b>	Q5T442
<b>Applications</b>	Western Blot : 0.1-0.5ug/ml
<b>Limitations</b>	This GJC2 antibody is available for research use only.



Western blot testing of 1) rat brain, 2) mouse brain, 3) human U20S and 4) human HeLa lysate with GJC2 antibody. Expected/observed molecular weight ~47 kDa.

## Description

Gap junction gamma-2 (GJC2), also known as connexin-46.6 (Cx46.6) and connexin-47 (Cx47) and gap junction alpha-12 (GJA12), is a protein that in humans is encoded by the GJC2 gene. It is mapped to 1q42.13. This gene encodes a gap junction protein. Gap junction proteins are members of a large family of homologous connexins and comprise 4 transmembrane, 2 extracellular, and 3 cytoplasmic domains. This gene plays a key role in central myelination and is involved in peripheral myelination in humans.

## Application Notes

Optimal dilution of the GJC2 antibody should be determined by the researcher.

## Immunogen

Amino acids VVRAAERARAHDQNLANLALQALRDGAAAGDRD of human GJC2 were used as the immunogen for the GJC2 antibody.

## Storage

After reconstitution, the GJC2 antibody can be stored for up to one month at 4oC. For long-term, aliquot and store at -20oC. Avoid repeated freezing and thawing.