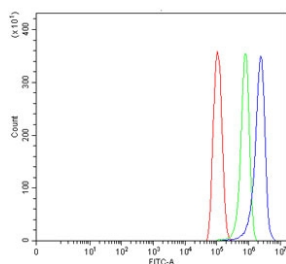


## GJB2 Antibody / Connexin 26 (RQ6877)

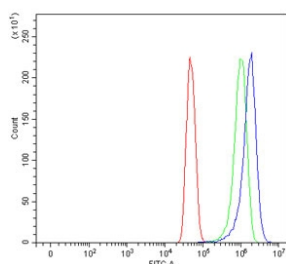
Catalog No.	Formulation	Size
RQ6877	0.5mg/ml if reconstituted with 0.2ml sterile DI water	100 ug

**Bulk quote request**

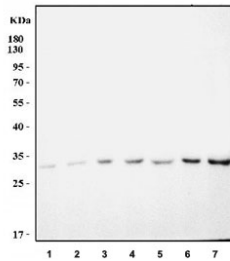
<b>Availability</b>	1-3 business days
<b>Species Reactivity</b>	Human, Mouse, Rat
<b>Format</b>	Antigen affinity purified
<b>Clonality</b>	Polyclonal (rabbit origin)
<b>Isotype</b>	Rabbit IgG
<b>Purity</b>	Antigen affinity purified
<b>Buffer</b>	Lyophilized from 1X PBS with 2% Trehalose
<b>UniProt</b>	P29033
<b>Applications</b>	Western Blot : 1-2ug/ml Flow Cytometry : 1-3ug/million cells
<b>Limitations</b>	This GJB2 antibody is available for research use only.



Flow cytometry testing of human PC-3 cells with GJB2 antibody at 1ug/million cells (blocked with goat sera); Red=cells alone, Green=isotype control, Blue= GJB2 antibody.



Flow cytometry testing of human U-251 cells with GJB2 antibody at 1ug/million cells (blocked with goat sera); Red=cells alone, Green=isotype control, Blue= GJB2 antibody.



Western blot testing of 1) human PC-3, 2) human RT4, 3) human U-251, 4) rat liver, 5) rat kidney, 6) mouse liver and 7) mouse kidney tissue lysate with GJB2 antibody.  
Predicted molecular weight: ~26 kDa.

## Description

Connexin26 (CX26), also known as GAP junction protein, beta2, GJB2. Gap junctions were first characterized by electron microscopy as regionally specialized structures on plasma membranes of contacting adherent cells. These structures were shown to consist of cell-to-cell channels. Proteins, called connexins, purified from fractions of enriched gap junctions from different tissues differ. The 3-prime untranslated region of the CX26 transcript contains a putative mRNA instability sequence. The deduced 226-amino acid protein has a calculated molecular mass of about 26 kD. CX26 shares 92.5% identity with rat Cx26. connexin 26(GJB2) is assigned to human chromosome 13q11-q12 .Connexin 26 regulates epidermal barrier and wound remodeling and promotes psoriasiform response. Connexin 26 gene(GJB2) mutation modulates the severity of hearing loss associated with the 1555A-G mitochondrial mutation.

## Application Notes

Optimal dilution of the GJB2 antibody should be determined by the researcher.

## Immunogen

Amino acids FYVMYDGFMSMQRLVKCN from the human protein were used as the immunogen for the GJB2 antibody.

## Storage

After reconstitution, the GJB2 antibody can be stored for up to one month at 4oC. For long-term, aliquot and store at -20oC. Avoid repeated freezing and thawing.