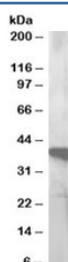


## GIPC3 Antibody (R33773)

Catalog No.	Formulation	Size
R33773-100UG	0.5 mg/ml in 1X TBS, pH7.3, with 0.5% BSA (US sourced) and 0.02% sodium azide	100 ug

[Bulk quote request](#)

Availability	1-3 business days
Species Reactivity	Human
Format	Antigen affinity purified
Host	Goat
Clonality	Polyclonal (goat origin)
Isotype	Goat Ig
Purity	Antigen affinity
Gene ID	126326
Applications	Western Blot : 0.2-1.5ug/ml ELISA (peptide) LOD : 1:32000
Limitations	This GIPC3 antibody is available for research use only.



Western blot testing of human lymph node lysate with GIPC3 antibody at 0.5ug/ml.  
Predicted molecular weight ~36kDa.

## Description

Additional name(s) for this target protein: GIPC PDZ domain containing family, member 3

## Application Notes

Optimal dilution of the GIPC3 antibody should be determined by the researcher.

## Immunogen

Amino acids EGAAAREARGTET were used as the immunogen for this GIPC3 antibody.

## **Storage**

Aliquot and store the GIPC3 antibody at -20oC.