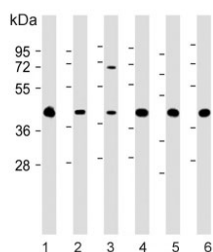


GIPC1 Antibody / NIP (F54704)

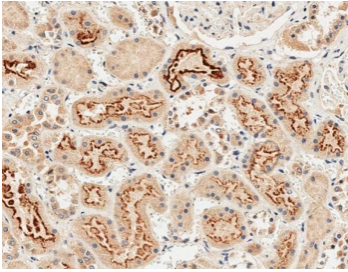
Catalog No.	Formulation	Size
F54704-0.4ML	In 1X PBS, pH 7.4, with 0.09% sodium azide	0.4 ml
F54704-0.08ML	In 1X PBS, pH 7.4, with 0.09% sodium azide	0.08 ml

[Bulk quote request](#)

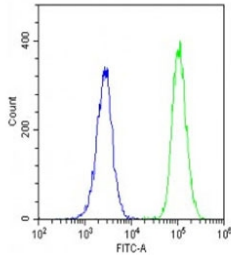
Availability	1-3 business days
Species Reactivity	Human, Mouse, Rat
Format	Purified
Host	Rabbit
Clonality	Polyclonal (rabbit origin)
Isotype	Rabbit Ig
Purity	Antigen affinity purified
UniProt	O14908
Localization	Cytoplasmic
Applications	Western Blot : 1:500-1:2000 Flow Cytometry : 1:25 (1x10e6 cells) Immunohistochemistry (FFPE) : 1:25
Limitations	This GIPC1 antibody is available for research use only.



Western blot testing of human 2) HEK293, 2) HeLa, 3) HepG2, 4) U-251 MG, 5) mouse brain and 6) rat brain lysate with GIPC1 antibody. Expected molecular weight: 36-42 kDa.



IHC testing of FFPE human kidney tissue with GIPC1 antibody. HIER: steam section in pH9 EDTA for 20 min and allow to cool prior to staining.



Flow cytometry testing of fixed and permeabilized human U-2 OS cells with GIPC1 antibody; Blue=isotype control, Green= GIPC1 antibody.

Description

GIPC1 is a scaffolding protein that regulates cell surface receptor expression and trafficking.

Application Notes

The stated application concentrations are suggested starting points. Titration of the GIPC1 antibody may be required due to differences in protocols and secondary/substrate sensitivity.

Immunogen

A portion of amino acids 52-81 from the human protein was used as the immunogen for the GIPC1 antibody.

Storage

Aliquot the GIPC1 antibody and store frozen at -20oC or colder. Avoid repeated freeze-thaw cycles.