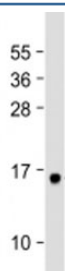


GHRL Antibody (F53880)

Catalog No.	Formulation	Size
F53880-0.05ML	In 1X PBS, pH 7.4, with 0.09% sodium azide	0.05 ml

[Bulk quote request](#)

Availability	1-3 business days
Species Reactivity	Human
Format	Antigen affinity purified
Host	Rabbit
Clonality	Polyclonal (rabbit origin)
Isotype	Rabbit Ig
Purity	Antigen affinity
UniProt	Q9UBU3
Applications	Western Blot : 1:1000-2000
Limitations	This GHRL antibody is available for research use only.



Western blot testing of human plasma lysate with GHRL antibody at 1:2000. Predicted molecular weight: 13 kDa.

Description

Ghrelin is the ligand for growth hormone secretagogue receptor type 1 (GHSR). Induces the release of growth hormone from the pituitary. Has an appetite-stimulating effect, induces adiposity and stimulates gastric acid secretion. Involved in growth regulation.

Application Notes

Titration of the GHRL antibody may be required due to differences in protocols and substrate sensitivity.

Immunogen

A portion of amino acids 11-43 from the human protein was used as the immunogen for the GHRL antibody.

Storage

Aliquot the GHRL antibody and store frozen at -20oC or colder. Avoid repeated freeze-thaw cycles.