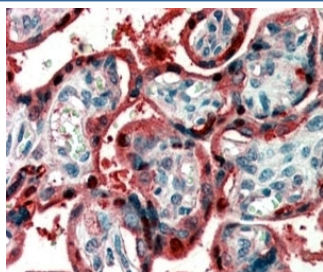


Ghrelin Antibody (R35219)

Catalog No.	Formulation	Size
R35219-100UG	0.5 mg/ml in 1X TBS, pH7.3, with 0.5% BSA (US sourced) and 0.02% sodium azide	100 ug

[Bulk quote request](#)

Availability	1-3 business days
Species Reactivity	Human, Rat
Format	Antigen affinity purified
Host	Goat
Clonality	Polyclonal (goat origin)
Isotype	Goat Ig
Purity	Antigen affinity
Gene ID	51738
Applications	Immunohistochemistry (FFPE) : 2-5ug/ml Immunocytochemistry : suitable ELISA (peptide) LOD : 1:8000
Limitations	This Ghrelin antibody is available for research use only.



IHC testing of FFPE human placenta with Ghrelin antibody at 2ug/ml. HIER: steamed with pH6 citrate buffer, AP-staining.

Description

Additional name(s) for this target protein: Ghrelin preproprotein; GHRL

Application Notes

Optimal dilution of the Ghrelin antibody should be determined by the researcher.

Immunogen

Amino acids QDILWEEAKEAPADK were used as the immunogen for this Ghrelin antibody.

Storage

Aliquot and store the Ghrelin antibody at -20oC.