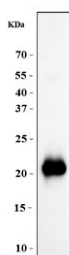


GH1 Antibody / Growth Hormone (RQ6875)

Catalog No.	Formulation	Size
RQ6875	0.5mg/ml if reconstituted with 0.2ml sterile DI water	100 ug

Bulk quote request

Availability	1-3 business days
Species Reactivity	Human
Format	Antigen affinity purified
Clonality	Polyclonal (rabbit origin)
Isotype	Rabbit IgG
Purity	Antigen affinity purified
Buffer	Lyophilized from 1X PBS with 2% Trehalose
UniProt	P01241
Applications	Western Blot : 1-2ug/ml
Limitations	This GH1 antibody is available for research use only.



Western blot testing of human placental tissue with GH1 antibody. Predicted molecular weight: 22-25 kDa.

Description

Growth Hormone (GH) is mapped to 17q22-q24. Growth hormone (GH) is synthesized by acidophilic or somatotrophic cells of the anterior pituitary gland. Human growth hormone has a molecular mass of 22,005 and contains 191 amino acid residues with 2 disulfide bridges. It binds two receptor molecules and thereby induces signal transduction through receptor dimerization. At high concentrations, GH acts as an antagonist because of a large difference in affinities at the respective binding sites.

Application Notes

Optimal dilution of the GH1 antibody should be determined by the researcher.

Immunogen

Recombinant human protein (amino acids F27-F217) was used as the immunogen for the GH1 antibody.

Storage

After reconstitution, the GH1 antibody can be stored for up to one month at 4°C. For long-term, aliquot and store at -20°C. Avoid repeated freezing and thawing.