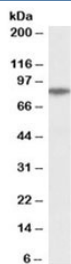


## GGCX Antibody (R35095)

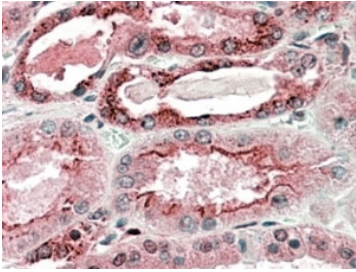
Catalog No.	Formulation	Size
R35095-100UG	0.5 mg/ml in 1X TBS, pH7.3, with 0.5% BSA (US sourced) and 0.02% sodium azide	100 ug

[Bulk quote request](#)

<b>Availability</b>	1-3 business days
<b>Species Reactivity</b>	Human
<b>Predicted Reactivity</b>	Dog
<b>Format</b>	Antigen affinity purified
<b>Host</b>	Goat
<b>Clonality</b>	Polyclonal (goat origin)
<b>Isotype</b>	Goat Ig
<b>Purity</b>	Antigen affinity
<b>Gene ID</b>	2677
<b>Localization</b>	Cytoplasmic
<b>Applications</b>	Western Blot : 0.3-1ug/ml Immunohistochemistry (FFPE) : 5-10ug/ml ELISA (peptide) LOD : 1:32000
<b>Limitations</b>	This GGCX antibody is available for research use only.



Western blot testing of human muscle lysate with GGCX antibody at 0.3ug/ml. Predicted molecular weight ~85kDa.



IHC staining of FFPE human kidney with GGCX antibody at 5ug/ml. HIER: steamed with pH6 citrate buffer, AP-staining.

## Description

Additional name(s) for this target protein: Gamma-glutamyl carboxylase

## Application Notes

Optimal dilution of the GGCX antibody should be determined by the researcher.

## Immunogen

Amino acids PPESNPDPVHSE were used as the immunogen for this GGCX antibody.

## Storage

Aliquot and store the GGCX antibody at -20oC.