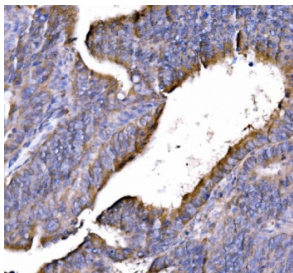


## GGA3 Antibody (RQ6556)

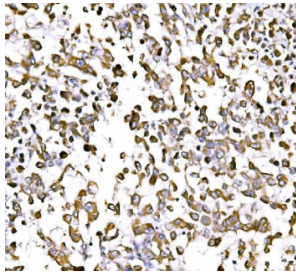
Catalog No.	Formulation	Size
RQ6556	0.5mg/ml if reconstituted with 0.2ml sterile DI water	100 ug

### Bulk quote request

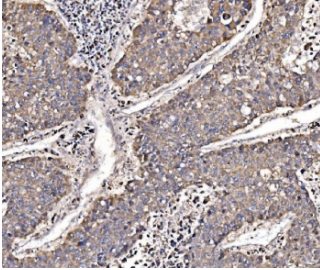
<b>Availability</b>	1-3 business days
<b>Species Reactivity</b>	Human
<b>Format</b>	Antigen affinity purified
<b>Host</b>	Rabbit
<b>Clonality</b>	Polyclonal (rabbit origin)
<b>Isotype</b>	Rabbit IgG
<b>Purity</b>	Affinity purified
<b>Buffer</b>	Lyophilized from 1X PBS with 2% Trehalose
<b>UniProt</b>	Q9NZ52
<b>Localization</b>	Cytoplasmic
<b>Applications</b>	Western Blot : 1-2ug/ml Immunohistochemistry (FFPE) : 2-5ug/ml Flow Cytometry : 1-3ug/million cells Direct ELISA : 0.1-0.5ug/ml
<b>Limitations</b>	This GGA3 antibody is available for research use only.



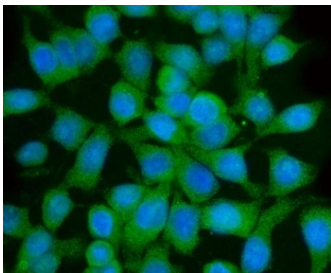
IHC staining of FFPE human rectal cancer tissue with GGA3 antibody. HIER: boil tissue sections in pH8 EDTA for 20 min and allow to cool before testing.



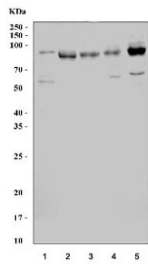
IHC staining of FFPE human pancreatic cancer tissue with GGA3 antibody. HIER: boil tissue sections in pH8 EDTA for 20 min and allow to cool before testing.



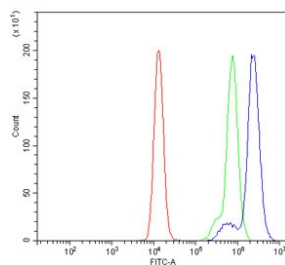
IHC staining of FFPE human liver cancer tissue with GGA3 antibody. HIER: boil tissue sections in pH8 EDTA for 20 min and allow to cool before testing.



Immunofluorescent staining of FFPE human Caco-2 cells with GGA3 antibody (green) and DAPI nuclear stain (blue). HIER: steam section in pH6 citrate buffer for 20 min.



Western blot testing of human 1) SH-SY5Y, 2) HEL, 3) K562, 4) HL60 and 5) T-47D cell lysate with GGA3 antibody. Predicted molecular weight ~78 kDa but can be observed at up to 90 kDa.



Flow cytometry testing of human Raji cells with GGA3 antibody at 1ug/million cells (blocked with goat sera); Red=cells alone, Green=isotype control, Blue= GGA3 antibody.

## Description

ADP-ribosylation factor-binding protein GGA3 is a protein that in humans is encoded by the GGA3 gene. This gene encodes a member of the Golgi-localized, gamma adaptin ear-containing, ARF-binding (GGA) family. This family includes ubiquitous coat proteins that regulate the trafficking of proteins between the trans-Golgi network and the lysosome. These proteins share an amino-terminal VHS domain which mediates sorting of the mannose 6-phosphate receptors at the trans-Golgi network. They also contain a carboxy-terminal region with homology to the ear domain of gamma-adaptins. Multiple alternatively spliced transcript variants have been identified in this gene.

## Application Notes

Optimal dilution of the GGA3 antibody should be determined by the researcher.

## **Immunogen**

An E. coli-derived human protein (amino acids E7-P535) was used as the immunogen for the GGA3 antibody.

## **Storage**

After reconstitution, the GGA3 antibody can be stored for up to one month at 4oC. For long-term, aliquot and store at -20oC. Avoid repeated freezing and thawing.