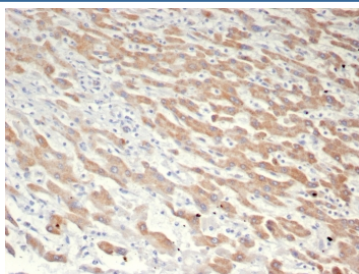


GFRP Antibody / GCHFR [clone GCHFR/7731] (V4384)

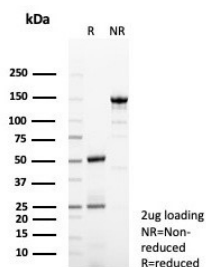
Catalog No.	Formulation	Size
V4384-100UG	0.2 mg/ml in 1X PBS with 0.1 mg/ml BSA (US sourced), 0.05% sodium azide	100 ug
V4384-20UG	0.2 mg/ml in 1X PBS with 0.1 mg/ml BSA (US sourced), 0.05% sodium azide	20 ug
V4384SAF-100UG	1 mg/ml in 1X PBS; BSA free, sodium azide free	100 ug

[Bulk quote request](#)

Availability	1-3 business days
Species Reactivity	Human
Format	Purified
Host	Mouse
Clonality	Monoclonal (mouse origin)
Isotype	Mouse IgG2, kappa
Clone Name	GCHFR/7731
Purity	Protein A/G affinity
UniProt	P30047
Localization	Cytoplasm (Lysosome)
Applications	Immunohistochemistry (FFPE) : 1-2ug/ml for 30 minutes at RT
Limitations	This GFRP antibody is available for research use only.



IHC staining of FFPE human liver in HCC with GFRP antibody (clone GCHFR/7731).
HIER: boil tissue sections in pH 9 10mM Tris with 1mM EDTA for 20 min and allow to cool before testing.



SDS-PAGE analysis of purified, BSA-free GFRP antibody (clone GCHFR/7731) as confirmation of integrity and purity.

Description

GTP cyclohydrolase I feedback regulatory protein (GFRP) is encoded by the gene GCHFR. GFRP mediates feedback inhibition of GTP cyclohydrolase I activity by tetrahydrobiopterin. GFRP also acts as a mediator for the stimulatory effect of phenylalanine on enzyme activity. L-phenylalanine reverses this inhibition. Cross-linking experiments have shown that GFRP is usually expressed as a homodimer or pentamer.

Application Notes

Optimal dilution of the GFRP antibody should be determined by the researcher.

Immunogen

A recombinant fragment of human protein was used as the immunogen for the GCHFR antibody.

Storage

Aliquot the GFRP antibody and store frozen at -20oC or colder. Avoid repeated freeze-thaw cycles.