

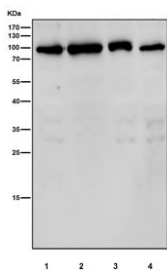
GFAT Antibody / GFPT1 [clone 28G40] (RQ8359)

Catalog No.	Formulation	Size
RQ8359	Antibody in PBS with 0.02% sodium azide, 50% glycerol and 0.4-0.5mg/ml BSA	100 ul

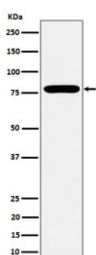
Recombinant **RABBIT MONOCLONAL**

[Bulk quote request](#)

Availability	1-3 business days
Species Reactivity	Human
Format	Purified
Host	Rabbit
Clonality	Recombinant Rabbit Monoclonal
Isotype	Rabbit IgG
Clone Name	28G40
Purity	Affinity chromatography
UniProt	Q06210
Applications	Western Blot : 1:500-1:2000
Limitations	This GFAT antibody is available for research use only.



Western blot testing of human 1) Jurkat, 2) HepG2, 3) MCF7 and 4) SH-SY5Y cell lysate with GFAT antibody. Predicted molecular weight ~79 kDa.



Western blot testing of human MCF7 cell lysate with GFAT antibody. Predicted molecular weight ~79 kDa.

Description

Controls the flux of glucose into the hexosamine pathway. Most likely involved in regulating the availability of precursors for N- and O-linked glycosylation of proteins. [UniProt]

Application Notes

Optimal dilution of the GFAT antibody should be determined by the researcher.

Immunogen

A synthetic peptide derived from human Glutamine:fructose-6-phosphate amidotransferase 1 protein was used as the immunogen for the GFAT antibody.

Storage

Store the GFAT antibody at -20oC.