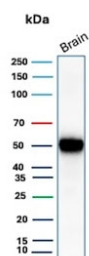


## GFAP Antibody / Glial Fibrillary Acidic Protein [clone GFAP/9421] (V5482)

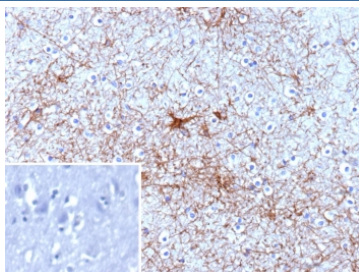
Catalog No.	Formulation	Size
V5482-100UG	0.2 mg/ml in 1X PBS with 0.1 mg/ml BSA (US sourced), 0.05% sodium azide	100 ug
V5482-20UG	0.2 mg/ml in 1X PBS with 0.1 mg/ml BSA (US sourced), 0.05% sodium azide	20 ug
V5482SAF-100UG	1 mg/ml in 1X PBS; BSA free, sodium azide free	100 ug

[Bulk quote request](#)

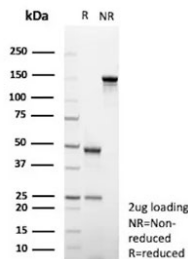
<b>Availability</b>	1-3 business days
<b>Species Reactivity</b>	Human
<b>Format</b>	Purified
<b>Clonality</b>	Monoclonal (mouse origin)
<b>Isotype</b>	Mouse IgG2, kappa
<b>Clone Name</b>	GFAP/9421
<b>Purity</b>	Protein A/G affinity
<b>UniProt</b>	P14136
<b>Localization</b>	Cytoplasm
<b>Applications</b>	Immunohistochemistry (FFPE) : 1-2ug/ml Western Blot : 2-4ug/ml
<b>Limitations</b>	This GFAP antibody is available for research use only.



Western blot testing of human brain tissue lysate with GFAP antibody (clone GFAP/9421). Predicted molecular weight ~50 kDa.



IHC staining of FFPE human prostate carcinoma with GFAP antibody (clone GFAP/9421). Inset: PBS used in place of primary Ab (secondary Ab negative control).  
HIER: boil tissue sections in pH 9 10mM Tris with 1mM EDTA for 20 min and allow to cool before testing.



SDS-PAGE analysis of purified, BSA-free GFAP antibody (clone GFAP/9421) as confirmation of integrity and purity.

## Description

This MAb recognizes a protein of ~50kDa which is identified as Glial Fibrillary Acidic Protein (GFAP). It shows no cross-reaction with other intermediate filament proteins. GFAP is specifically found in astroglia. GFAP is a very popular marker for localizing benign astrocyte and neoplastic cells of glial origin in the central nervous system. Antibody to GFAP is useful in differentiating primary gliomas from metastatic lesions in the brain and for documenting astrocytic differentiation in tumors outside the CNS.

## Application Notes

Optimal dilution of the GFAP antibody should be determined by the researcher.

## Immunogen

A recombinant fragment (within amino acids 150-250) of human GFAP protein was used as the immunogen for the GFAP antibody.

## Storage

Aliquot the GFAP antibody and store frozen at -20oC or colder. Avoid repeated freeze-thaw cycles.