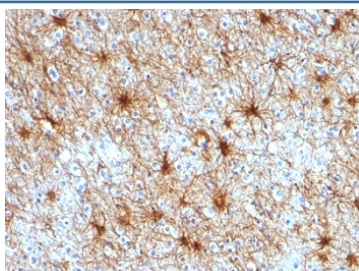


GFAP Antibody [clone ASTRO/789] (V2528)

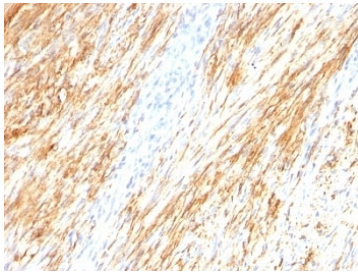
Catalog No.	Formulation	Size
V2528-100UG	0.2 mg/ml in 1X PBS with 0.1 mg/ml BSA (US sourced) and 0.05% sodium azide	100 ug
V2528-20UG	0.2 mg/ml in 1X PBS with 0.1 mg/ml BSA (US sourced) and 0.05% sodium azide	20 ug
V2528SAF-100UG	1 mg/ml in 1X PBS; BSA free, sodium azide free	100 ug
V2528IHC-7ML	Prediluted in 1X PBS with 0.1 mg/ml BSA (US sourced) and 0.05% sodium azide; *For IHC use only*	7 ml

Bulk quote request

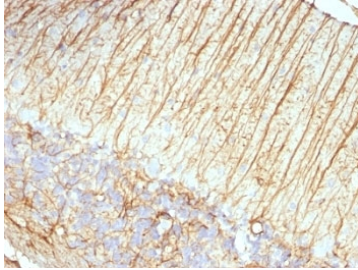
Availability	1-3 business days
Species Reactivity	Human, Rat
Format	Purified
Clonality	Monoclonal (mouse origin)
Isotype	Mouse IgG1, kappa
Clone Name	ASTRO/789
Purity	Protein G affinity chromatography
UniProt	P14136
Localization	Cytoplasmic
Applications	Western Blot : 1-2ug/ml Immunohistochemistry (FFPE) : 0.25-0.5ug/ml for 30 min at RT
Limitations	This GFAP antibody is available for research use only.



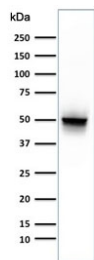
IHC: Formalin-fixed, paraffin-embedded human cerebellum stained with GFAP antibody (ASTRO/789).



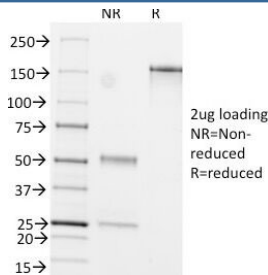
IHC: Formalin-fixed, paraffin-embedded human Schwannoma stained with GFAP antibody (ASTRO/789).



IHC: Formalin-fixed, paraffin-embedded rat cerebellum stained with GFAP antibody (ASTRO/789).



Western blot testing of human brain lysate with GFAP antibody (clone ASTRO/789). Predicted molecular weight ~50 kDa.



SDS-PAGE Analysis of Purified, BSA-Free GFAP Antibody (clone ASTRO/789). Confirmation of Integrity and Purity of the Antibody.

Description

This mAb recognizes a protein of ~50kDa which is identified as Glial Fibrillary Acidic Protein (GFAP). It shows no cross-reaction with other intermediate filament proteins. GFAP is specifically found in astroglia. GFAP is a very popular marker for localizing benign astrocyte and neoplastic cells of glial origin in the central nervous system. Antibody to GFAP is useful in differentiating primary gliomas from metastatic lesions in the brain and for documenting astrocytic differentiation in tumors outside the CNS.

Application Notes

Optimal dilution of the GFAP antibody should be determined by the researcher.

1. Staining of formalin-fixed tissues requires boiling tissue sections in pH 9 10mM Tris with 1mM EDTA for 10-20 min followed by cooling at RT for 20 min
2. The prediluted format is supplied in a dropper bottle and is optimized for use in IHC. After epitope retrieval step (if required), drip mAb solution onto the tissue section and incubate at RT for 30 min.

Immunogen

Full length recombinant protein was used as the immunogen for the GFAP antibody.

Storage

Store the GFAP antibody at 2-8oC (with azide) or aliquot and store at -20oC or colder (without azide).