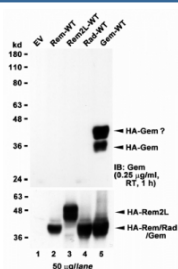


GEM Antibody (R35322)

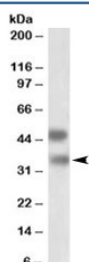
Catalog No.	Formulation	Size
R35322-100UG	0.5 mg/ml in 1X TBS, pH7.3, with 0.5% BSA (US sourced) and 0.02% sodium azide	100 ug

[Bulk quote request](#)

Availability	1-3 business days
Species Reactivity	Human
Format	Antigen affinity purified
Host	Goat
Clonality	Polyclonal (goat origin)
Isotype	Goat Ig
Purity	Antigen affinity
Gene ID	2669
Applications	Western Blot : 1-3ug/ml ELISA (peptide) LOD : 1:16000
Limitations	This GEM antibody is available for research use only.



Western blot of HEK293 lysate overexpressing full-length human GEM (HA tagged), mock-transfected HEK293 (EV) and HEK293 transiently expressing the GEM-related genes Rem, Rem2L and Rad. Lysates were tested with GEM antibody at 1ug/ml (top) and HA tag Ab (bottom).



Western blot testing of human spleen lysate with GEM antibody at 1ug/ml. Spleen lysate shows a similar band pattern as transfected cell lysate. Predicted molecular weight ~34kDa.

Description

Additional name(s) for this target protein: GTP binding protein overexpressed in skeletal muscle

Application Notes

Optimal dilution of the GEM antibody should be determined by the researcher.

Immunogen

Amino acids QKEPHQYSHRNRH were used as the immunogen for this GEM antibody.

Storage

Aliquot and store the GEM antibody at -20oC.