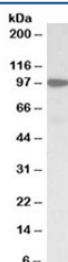


## Gelsolin Antibody (R35115)

Catalog No.	Formulation	Size
R35115-100UG	0.5 mg/ml in 1X TBS, pH7.3, with 0.5% BSA (US sourced) and 0.02% sodium azide	100 ug

[Bulk quote request](#)

Availability	1-3 business days
Species Reactivity	Human
Format	Antigen affinity purified
Host	Goat
Clonality	Polyclonal (goat origin)
Isotype	Goat Ig
Purity	Antigen affinity
Gene ID	2934
Applications	Western Blot : 1-3ug/ml ELISA (peptide) LOD : 1:64000
Limitations	This Gelsolin antibody is available for research use only.



Western blot testing of human duodenum lysate with Gelsolin antibody at 1ug/ml.  
Predicted molecular weight ~86kDa, observed here at ~100kDa.

## Description

Additional name(s) for this target protein: GSN, ADF, AGEL

## Application Notes

Optimal dilution of the Gelsolin antibody should be determined by the researcher.

1. This Gelsolin antibody is specific for isoform a.

## Immunogen

Amino acids PQGRVPEARPNS were used as the immunogen for this Gelsolin antibody.

## Storage

Aliquot and store the Gelsolin antibody at -20oC.