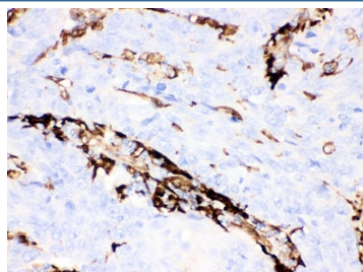


## Gelsolin Antibody [clone GS-2C4] (R30038)

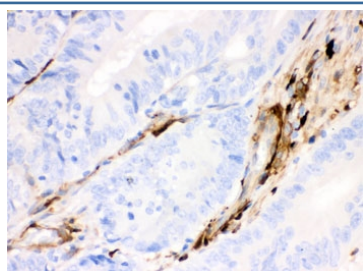
Catalog No.	Formulation	Size
R30038	0.5mg/ml with 1% BSA and 0.01% sodium azide if reconstituted with 0.2ml sterile 1X PBS	100 ug

[Bulk quote request](#)

Availability	1-3 business days
Species Reactivity	Human, Rabbit
Format	Ascites
Clonality	Monoclonal (mouse origin)
Isotype	Mouse IgG1
Clone Name	GS-2C4
Purity	Ascites
Gene ID	2934
Applications	Western Blot : 0.5-1ug/ml IHC (FFPE) : 1-2ug/ml IHC (Frozen) : 1-2ug/ml for acetone fixed tissues
Limitations	This Gelsolin antibody is available for research use only.



IHC testing of FFPE human lung cancer tissue with Gelsolin antibody. HIER: steamed with pH6 citrate buffer, HRP-staining.



IHC testing of FFPE human intestinal cancer tissue with Gelsolin antibody. HIER: steamed with pH6 citrate buffer, HRP-staining.

## Description

Gelsolin, a protein of leukocytes, platelets, and other cells, severs actin filaments in the presence of submicromolar calcium, thereby solating cytoplasmic actin gels. A gelsolin variant with 23 more N-terminal amino acids is a plasma component probably involved in the clearance of actin, the most abundant human protein, from the circulation. Gelsolin is located in 9q34. Plasma and cytoplasmic gelsolins are encoded by a single gene and contain a duplicated actin-binding domain.

## Application Notes

The stated application concentrations are suggested starting amounts. Titration of the Gelsolin antibody may be required due to differences in protocols and secondary/substrate sensitivity.

## Immunogen

Human plasma gelsolin was used as the immunogen for this Gelsolin antibody.

## Storage

After reconstitution, the Gelsolin antibody can be stored for up to one month at 4°C. For long-term, aliquot and store at -20°C. Avoid repeated freezing and thawing.