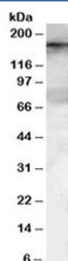


GEF5 Antibody / Rho guanine nucleotide exchange factor 5 (R33496)

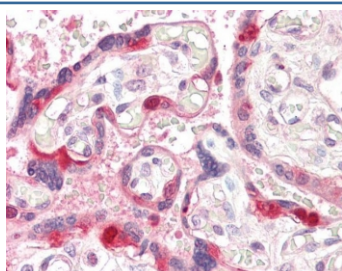
Catalog No.	Formulation	Size
R33496-100UG	0.5 mg/ml in 1X TBS, pH7.3, with 0.5% BSA (US sourced) and 0.02% sodium azide	100 ug

[Bulk quote request](#)

Availability	1-3 business days
Species Reactivity	Human
Format	Antigen affinity purified
Clonality	Polyclonal (goat origin)
Isotype	Goat Ig
Purity	Antigen affinity
Gene ID	7984
Localization	Cytoplasmic, nuclear
Applications	Western Blot : 0.1-0.3ug/ml IHC (FFPE) : 3.75ug/ml ELISA (peptide) LOD : 1:16000
Limitations	This GEF5 antibody is available for research use only.



Western blot testing of HeLa lysate with GEF5 antibody at 0.1ug/ml. Predicted molecular weight: ~177 kDa.



IHC testing of FFPE human placental tissue with GEF5 antibody at 3.75ug/ml. Required HIER: steamed antigen retrieval with pH6 citrate buffer; AP-staining.

Description

Additional name(s) for this target protein: Rho guanine nucleotide exchange factor (GEF) 5; ARHGEF5

Application Notes

Optimal dilution of the GEF5 antibody should be determined by the researcher.

Immunogen

Amino acids DKEIDQNSQQEE were used as the immunogen for this GEF5 antibody.

Storage

Aliquot and store the GEF5 antibody at -20oC.