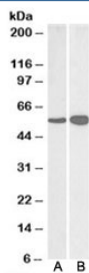


GDH Antibody / Glutamate dehydrogenase (R33991)

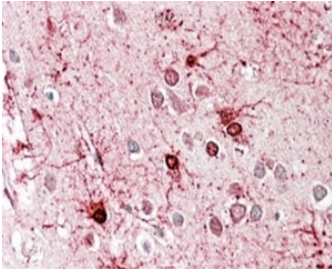
Catalog No.	Formulation	Size
R33991-100UG	0.5 mg/ml in 1X TBS, pH7.3, with 0.5% BSA (US sourced) and 0.02% sodium azide	100 ug

[Bulk quote request](#)

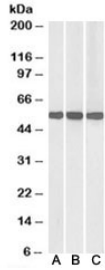
Availability	1-3 business days
Species Reactivity	Human, Mouse, Rat
Predicted Reactivity	Cow, Dog
Format	Antigen affinity purified
Host	Goat
Clonality	Polyclonal (goat origin)
Isotype	Goat Ig
Purity	Antigen affinity
Gene ID	2746; 2747
Applications	Western Blot : 0.3-1ug/ml Immunohistochemistry (FFPE) : 3-5ug/ml Immunofluorescence : suitable ELISA (peptide) LOD : 1:32000
Limitations	This GDH antibody is available for research use only.



Western blot testing of human [A] and mouse [B] brain lysate with GDH antibody at 0.03ug/ml. Predicted molecular weight ~61kDa.



IHC staining of FFPE human cerebral cortex with GDH antibody at 4ug/ml. HIER: steamed with pH6 citrate buffer, AP-staining.



Western blot of human (A), mouse (B) and rat (C) liver lysate with GDH antibody at 0.01ug/ml. Predicted molecular weight ~61kDa.

Description

Additional name(s) for this target protein: Glutamate Dehydrogenase; GLUD1; GLUD2

Application Notes

Optimal dilution of the GDH antibody should be determined by the researcher.

Immunogen

Amino acids ESEEQKRNRVRGILR were used as the immunogen for this GDH antibody.

Storage

Aliquot and store the GDH antibody at -20oC.