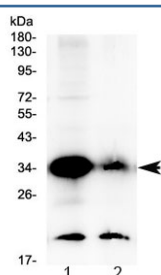


## GDF15 Antibody (R32786)

Catalog No.	Formulation	Size
R32786	0.5mg/ml if reconstituted with 0.2ml sterile DI water	100 ug

**Bulk quote request**

<b>Availability</b>	1-3 business days
<b>Species Reactivity</b>	Human
<b>Format</b>	Antigen affinity purified
<b>Clonality</b>	Polyclonal (rabbit origin)
<b>Isotype</b>	Rabbit IgG
<b>Purity</b>	Antigen affinity
<b>Buffer</b>	Lyophilized from 1X PBS with 2.5% BSA, 0.025% sodium azide
<b>UniProt</b>	Q99988
<b>Applications</b>	Western Blot : 0.5-1ug/ml
<b>Limitations</b>	This GDF15 antibody is available for research use only.



Western blot testing of human 1) 22RV1 and 2) placenta lysate with GDF15 antibody at 0.5ug/ml. Predicted molecular weight ~34 kDa (pro-form) and ~25 kDa (mature form).

## Description

Growth/differentiation factor 15 (GDF15) is a protein belonging to the transforming growth factor beta superfamily that has a role in regulating inflammatory and apoptotic pathways in injured tissues and during disease processes. GDF15 is also known as TGF-PL, MIC-1, PDF, PLAB, and PTGFB. GDF15 mRNA is most abundant in the liver, with lower levels seen in some other tissues. Its expression in liver can be significantly up-regulated in during injury of organs such as liver, kidney, heart and lung.

## Application Notes

Optimal dilution of the GDF15 antibody should be determined by the researcher.

## Immunogen

Amino acids A195-I308 from the human protein were used as the immunogen for the GDF15 antibody.

## Storage

After reconstitution, the GDF15 antibody can be stored for up to one month at 4°C. For long-term, aliquot and store at -20°C. Avoid repeated freezing and thawing.