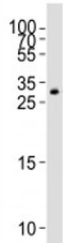


GDF15 Antibody (F52733)

Catalog No.	Formulation	Size
F52733-0.4ML	In 1X PBS, pH 7.4, with 0.09% sodium azide	0.4 ml
F52733-0.08ML	In 1X PBS, pH 7.4, with 0.09% sodium azide	0.08 ml

[Bulk quote request](#)

Availability	1-3 business days
Species Reactivity	Human
Format	Antigen affinity purified
Clonality	Polyclonal (rabbit origin)
Isotype	Rabbit Ig
Purity	Antigen affinity
UniProt	Q99988
Applications	Western Blot : 1:1000
Limitations	This GDF15 antibody is available for research use only.



Western blot analysis of lysate from HT-1080 cell line using GDF15 antibody; Ab was diluted at 1:1000. Predicted molecular weight ~34 kDa (pro-form) and ~25 kDa (mature form).

Description

Growth/differentiation factor 15

Application Notes

Titration of the GDF15 antibody may be required due to differences in protocols and secondary/substrate sensitivity.

Immunogen

This GDF15 antibody was produced from a rabbit immunized with a KLH conjugated synthetic peptide between 258-293 amino acids from the C-terminal region of human GDF15.

Storage

Aliquot the GDF15 antibody and store frozen at -20oC or colder. Avoid repeated freeze-thaw cycles.