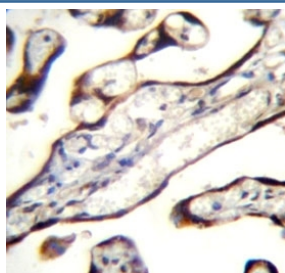


## GDF15 Antibody (F42280)

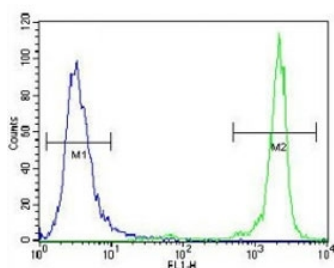
| Catalog No.   | Formulation                                | Size    |
|---------------|--|---------|
| F42280-0.4ML  | In 1X PBS, pH 7.4, with 0.09% sodium azide | 0.4 ml  |
| F42280-0.08ML | In 1X PBS, pH 7.4, with 0.09% sodium azide | 0.08 ml |

**Bulk quote request**

|                           |   |
|---------------------------|---|
| <b>Availability</b>       | 1-3 business days   |
| <b>Species Reactivity</b> | Human   |
| <b>Format</b>             | Antigen affinity purified   |
| <b>Clonality</b>          | Polyclonal (rabbit origin)  |
| <b>Isotype</b>            | Rabbit Ig   |
| <b>Purity</b>             | Antigen affinity  |
| <b>UniProt</b>            | Q99988  |
| <b>Applications</b>       | Western Blot : 1:1000<br>IHC (Paraffin) : 1:10-1:50<br>Flow Cytometry : 1:10-1:50 |
| <b>Limitations</b>        | This GDF15 antibody is available for research use only.                           |



GDF15 antibody immunohistochemistry analysis in formalin fixed and paraffin embedded human placenta tissue.



GDF15 antibody flow cytometric analysis of NCI-H460 cells (green) compared to a [negative control](#) (blue). FITC-conjugated goat-anti-rabbit secondary Ab was used for the analysis.

95  
72  
55  
36  
28  
17

GDF15 antibody western blot analysis in NCI-H460 lysate. Predicted molecular weight ~34 kDa (pro-form) and ~25 kDa (mature form).

## Description

Bone morphogenetic proteins are members of the transforming growth factor-beta superfamily and regulate tissue differentiation and maintenance. They are synthesized as precursor molecules that are processed at a dibasic cleavage site to release C-terminal domains containing a characteristic motif of 7 conserved cysteines in the mature protein.

## Application Notes

Titration of the GDF15 antibody may be required due to differences in protocols and secondary/substrate sensitivity.

## Immunogen

A portion of amino acids 51-79 from the human protein was used as the immunogen for this GDF15 antibody.

## Storage

Aliquot the GDF15 antibody and store frozen at -20oC or colder. Avoid repeated freeze-thaw cycles.