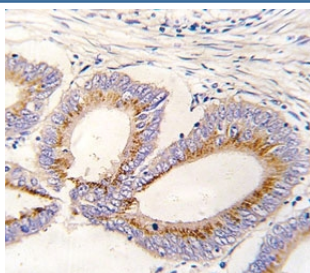


## GDF11 Antibody / BMP11 (F47919)

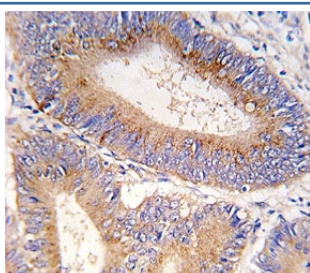
Catalog No.	Formulation	Size
F47919-0.4ML	In 1X PBS, pH 7.4, with 0.09% sodium azide	0.4 ml
F47919-0.08ML	In 1X PBS, pH 7.4, with 0.09% sodium azide	0.08 ml

**Bulk quote request**

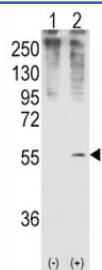
<b>Availability</b>	1-3 business days
<b>Species Reactivity</b>	Human
<b>Format</b>	Purified
<b>Clonality</b>	Polyclonal (rabbit origin)
<b>Isotype</b>	Rabbit Ig
<b>Purity</b>	Purified
<b>UniProt</b>	O95390
<b>Applications</b>	Western Blot : 1:1000 IHC (Paraffin) : 1:10-1:50
<b>Limitations</b>	This GDF11 antibody is available for research use only.



IHC analysis of FFPE human colon carcinoma tissue stained with GDF11 antibody



IHC analysis of FFPE human colon carcinoma tissue stained with GDF11 antibody



Western blot analysis of GDF11 antibody and 293 cell lysate (2 ug/lane) either nontransfected (Lane 1) or transiently transfected with the GDF11 gene (2).

## Description

GDF11 is a member of the bone morphogenetic protein (BMP) family and the TGF-beta superfamily. This group of proteins is characterized by a polybasic proteolytic processing site which is cleaved to produce a mature protein containing seven conserved cysteine residues. The members of this family are regulators of cell growth and differentiation in both embryonic and adult tissues. Studies in mice and *Xenopus* suggest that this protein is involved in mesodermal formation and neurogenesis during embryonic development.

## Application Notes

Titration of the GDF11 antibody may be required due to differences in protocols and secondary/substrate sensitivity.

## Immunogen

A portion of amino acids 32-61 from the human protein was used as the immunogen for this GDF11 antibody.

## Storage

Aliquot the GDF11 antibody and store frozen at -20°C or colder. Avoid repeated freeze-thaw cycles.