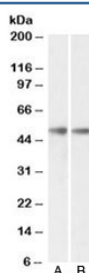


GDE1 Antibody (R35971)

Catalog No.	Formulation	Size
R35971-100UG	0.5 mg/ml in 1X TBS, pH7.3, with 0.5% BSA (US sourced) and 0.02% sodium azide	100 ug

[Bulk quote request](#)

Availability	1-3 business days
Species Reactivity	Human, Mouse, Rat
Format	Antigen affinity purified
Host	Goat
Clonality	Polyclonal (goat origin)
Isotype	Goat Ig
Purity	Antigen affinity
Gene ID	51573
Applications	Western Blot : 0.3-1ug/ml ELISA (peptide) LOD : 1:128000
Limitations	This GDE1 antibody is available for research use only.



Western blot testing of mouse [A] and rat [B] brain lysates with GDE1 antibody at 0.3ug/ml. Predicted molecular weight: ~38/50kDa (unmodified/glycosylated).

Description

Additional name(s) for this target protein: Glycerophosphodiester phosphodiesterase 1

Application Notes

Optimal dilution of the GDE1 antibody should be determined by the researcher.

Immunogen

Amino acids SLSHTGDGKPRYD were used as the immunogen for this GDE1 antibody.

Storage

Aliquot and store the GDE1 antibody at -20oC.