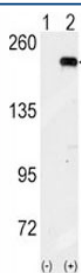


GCN2 Antibody (F50133)

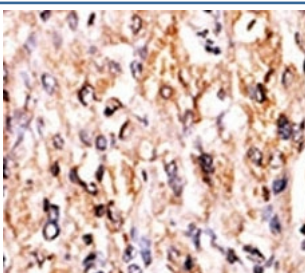
Catalog No.	Formulation	Size
F50133-0.4ML	In 1X PBS, pH 7.4, with 0.09% sodium azide	0.4 ml
F50133-0.08ML	In 1X PBS, pH 7.4, with 0.09% sodium azide	0.08 ml

[Bulk quote request](#)

Availability	1-3 business days
Species Reactivity	Human
Format	Purified
Host	Rabbit
Clonality	Polyclonal (rabbit origin)
Isotype	Rabbit Ig
Purity	Purified
UniProt	Q9P2K8
Applications	Western Blot : 1:1000 IHC (Paraffin) : 1:50-1:100
Limitations	This GCN2 antibody is available for research use only.



Western blot analysis of GCN2 antibody and 293 cell lysate (2 ug/lane) either nontransfected (Lane 1) or transiently transfected with the GCN2 gene (2).



IHC analysis of FFPE human hepatocarcinoma tissue stained with the GCN2 antibody

Description

GCN2 (EIF2AK4) belongs to a family of kinases that phosphorylate the alpha subunit of eukaryotic translation initiation factor-2 to downregulate protein synthesis in response to varied cellular stresses.

Application Notes

Titration of the GCN2 antibody may be required due to differences in protocols and secondary/substrate sensitivity.

Immunogen

A portion of amino acids 1-30 from the human protein was used as the immunogen for this GCN2 antibody.

Storage

Aliquot the GCN2 antibody and store frozen at -20oC or colder. Avoid repeated freeze-thaw cycles.