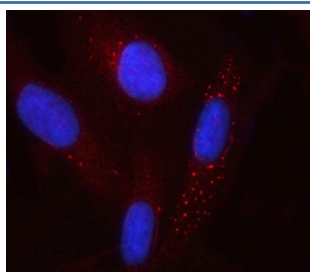


GCM1 Antibody / Glial cells missing homolog 1 / GCMA (RQ7783)

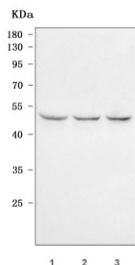
Catalog No.	Formulation	Size
RQ7783	0.5mg/ml if reconstituted with 0.2ml sterile DI water	100 ug

Bulk quote request

Availability	1-3 business days
Species Reactivity	Human
Format	Antigen affinity purified
Host	Rabbit
Clonality	Polyclonal (rabbit origin)
Isotype	Rabbit IgG
Purity	Antigen affinity purified
Buffer	Lyophilized from 1X PBS with 2% Trehalose
UniProt	Q9NP62
Localization	Vesicles
Applications	Western Blot : 0.5-1ug/ml Immunofluorescence : 5ug/ml Direct ELISA : 0.1-0.5ug/ml
Limitations	This GCM1 antibody is available for research use only.



Immunofluorescent staining of FFPE human U-2 OS cells with GCM1 antibody (red) and DAPI nuclear stain (blue). HIER: steam section in pH6 citrate buffer for 20 min.



Western blot testing of human 1) HepG2, 2) HeLa and 3) human placental tissue lysate with GCM1 antibody. Predicted molecular weight ~49 kDa.

Description

Chorion-specific transcription factor GCMA is a protein that, in humans, is encoded by the GCM1 gene. This gene encodes a DNA-binding protein with a gcm-motif (glial cell missing motif). The encoded protein is a homolog of the *Drosophila* glial cells missing gene (*gcm*). This protein binds to the GCM-motif (A/G)CCCGCAT, a novel sequence among known targets of DNA-binding proteins. The N-terminal DNA-binding domain confers the unique DNA-binding activity of this protein.

Application Notes

Optimal dilution of the GCM1 antibody should be determined by the researcher.

Immunogen

E. coli-derived recombinant human protein (amino acids E188-R436) was used as the immunogen for the GCM1 antibody.

Storage

After reconstitution, the GCM1 antibody can be stored for up to one month at 4°C. For long-term, aliquot and store at -20°C. Avoid repeated freezing and thawing.