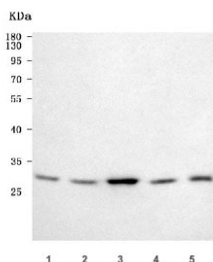


GCLM Antibody / Glutamate-cysteine ligase regulatory subunit (RQ8120)

Catalog No.	Formulation	Size
RQ8120	0.5mg/ml if reconstituted with 0.2ml sterile DI water	100 ug

Bulk quote request

Availability	1-3 business days
Species Reactivity	Human, Mouse, Rat
Format	Antigen affinity purified
Clonality	Polyclonal (rabbit origin)
Isotype	Rabbit IgG
Purity	Antigen affinity purified
Buffer	Lyophilized from 1X PBS with 2% Trehalose
UniProt	P48507
Applications	Western Blot : 0.5-1ug/ml Direct ELISA : 0.1-0.5ug/ml
Limitations	This GCLM antibody is available for research use only.



Western blot testing of 1) human 293T, 2) human Jurkat, 3) human HeLa, 4) rat L6 and 5) mouse NIH 3T3 cell lysate with GCLM antibody. Predicted molecular weight ~31 kDa.

Description

Glutamate-cysteine ligase regulatory subunit is an enzyme that in humans is encoded by the GCLM gene. Glutamate-cysteine ligase, also known as gamma-glutamylcysteine synthetase, is the first rate limiting enzyme of glutathione synthesis. The enzyme consists of two subunits, a heavy catalytic subunit and a light regulatory subunit. Gamma glutamylcysteine synthetase deficiency has been implicated in some forms of hemolytic anemia. Alternative splicing results in multiple transcript variants encoding different isoforms.

Application Notes

Optimal dilution of the GCLM antibody should be determined by the researcher.

Immunogen

E. coli-derived recombinant human protein (amino acids D4-K263) was used as the immunogen for the GCLM antibody.

Storage

After reconstitution, the GCLM antibody can be stored for up to one month at 4oC. For long-term, aliquot and store at -20oC. Avoid repeated freezing and thawing.