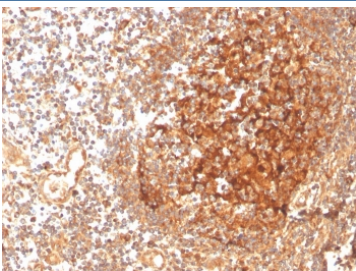


GCLM Antibody [clone CPTC-GCLM-1] (V8219)

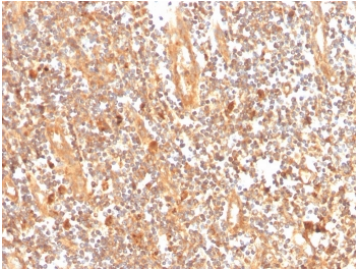
Catalog No.	Formulation	Size
V8219-100UG	0.2 mg/ml in 1X PBS with 0.1 mg/ml BSA (US sourced) and 0.05% sodium azide	100 ug
V8219-20UG	0.2 mg/ml in 1X PBS with 0.1 mg/ml BSA (US sourced) and 0.05% sodium azide	20 ug
V8219SAF-100UG	1 mg/ml in 1X PBS; BSA free, sodium azide free	100 ug

Bulk quote request

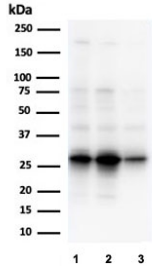
Availability	1-3 business days
Species Reactivity	Human
Format	Purified
Host	Mouse
Clonality	Monoclonal (mouse origin)
Isotype	Mouse IgG2a, kappa
Clone Name	CPTC-GCLM-1
Purity	Protein G affinity chromatography
UniProt	P48507
Localization	Cytoplasm
Applications	Western Blot : 1-2ug/ml Immunohistochemistry (FFPE) : 1-2ug/ml for 30 minutes at RT
Limitations	This GCLM antibody is available for research use only.



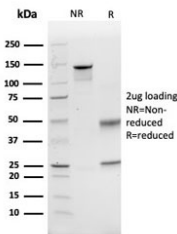
IHC staining of FFPE human tonsil with GCLM antibody. HIER: boil tissue sections in pH 9 10mM Tris with 1mM EDTA for 20 min and allow to cool before testing.



IHC staining of FFPE human tonsil with GCLM antibody. HIER: boil tissue sections in pH 9 10mM Tris with 1mM EDTA for 20 min and allow to cool before testing.



Western blot testing of human 1) A549, 2) A431 and 3) HepG2 cell lysate with GCLM antibody. Expected molecular weight ~31 kDa.



SDS-PAGE analysis of purified, BSA-free GCLM antibody as confirmation of integrity and purity.

Description

GCLM, also known as gamma-glutamylcysteine synthetase, is the first rate limiting enzyme of glutathione synthesis. The enzyme consists of two subunits, a heavy catalytic subunit and a light regulatory subunit. Gamma glutamylcysteine synthetase deficiency has been implicated in some forms of hemolytic anemia.

Application Notes

Optimal dilution of the GCLM antibody should be determined by the researcher.

Immunogen

Recombinant human full-length GCLM protein was used as the immunogen for the GCLM antibody.

Storage

Store the GCLM antibody at 2-8°C (with azide) or aliquot and store at -20°C or colder (without azide).