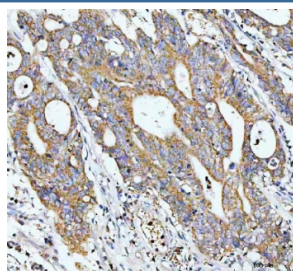


GCLC Antibody (R31614)

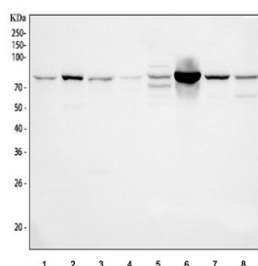
Catalog No.	Formulation	Size
R31614	0.5mg/ml if reconstituted with 0.2ml sterile DI water	100 ug

Bulk quote request

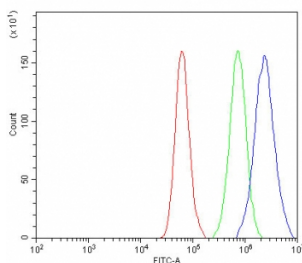
Availability	1-3 business days
Species Reactivity	Human, Mouse, Rat
Format	Antigen affinity purified
Clonality	Polyclonal (rabbit origin)
Isotype	Rabbit IgG
Purity	Antigen affinity
Buffer	Lyophilized from 1X PBS with 2% Trehalose
UniProt	P48506
Applications	Western Blot : 0.5-1ug/ml Immunohistochemistry (FFPE) : 2-5ug/ml Flow Cytometry : 1-3ug/million cells
Limitations	This GCLC antibody is available for research use only.



IHC staining of FFPE human colorectal cancer tissue with GCLC antibody. HIER: boil tissue sections in pH8 EDTA for 20 min and allow to cool before testing.



Western blot testing of 1) A549, 2) RT4, 3) HepG2, 4) A431, 5) rat liver, 6) rat kidney, 7) mouse liver and 8) mouse kidney tissue lysate with GCLC antibody. Predicted molecular weight ~72 kDa.



Flow cytometry testing of fixed and permeabilized human A549 cells with GCLC antibody at 1ug/million cells (blocked with goat sera); Red=cells alone, Green=isotype control, Blue= GCLC antibody.

Description

Glutamate-cysteine ligase catalytic subunit is an enzyme that in humans is encoded by the GCLC gene. Glutamate-cysteine ligase, also known as gamma-glutamylcysteine synthetase is the first rate limiting enzyme of glutathione synthesis. The enzyme consists of two subunits, a heavy catalytic subunit and a light regulatory subunit. The gene encoding the catalytic subunit encodes a protein of 367 amino acids with a calculated molecular weight of 72.773 kDa and maps to chromosome 6p12.1. Deficiency of gamma-glutamylcysteine synthetase in human is associated with enzymopathic hemolytic anemia.

Application Notes

The stated application concentrations are suggested starting amounts. Titration of the GCLC antibody may be required due to differences in protocols and secondary/substrate sensitivity.

Immunogen

Human partial recombinant protein (AA 437-637) was used as the immunogen for this GCLC antibody.

Storage

After reconstitution, the GCLC antibody can be stored for up to one month at 4oC. For long-term, aliquot and store at -20oC. Avoid repeated freezing and thawing.