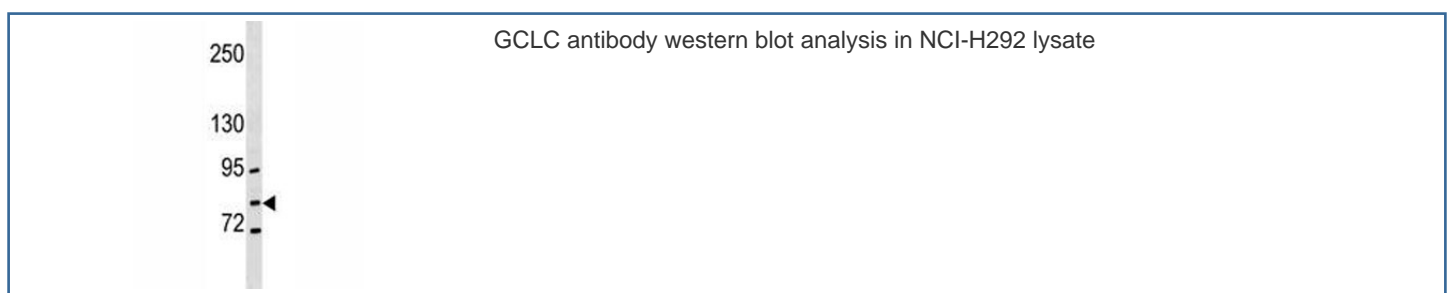
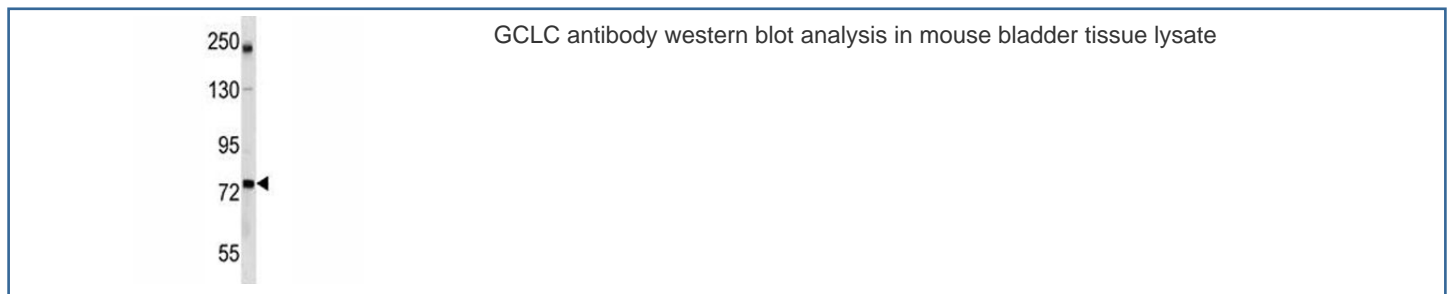


GCLC Antibody (F46551)

Catalog No.	Formulation	Size
F46551-0.4ML	In 1X PBS, pH 7.4, with 0.09% sodium azide	0.4 ml
F46551-0.08ML	In 1X PBS, pH 7.4, with 0.09% sodium azide	0.08 ml

[Bulk quote request](#)

Availability	1-3 business days
Species Reactivity	Human, Mouse
Predicted Reactivity	Rat
Format	Antigen affinity purified
Host	Rabbit
Clonality	Polyclonal (rabbit origin)
Isotype	Rabbit Ig
Purity	Antigen affinity
UniProt	P48506
Applications	Western Blot : 1:1000
Limitations	This GCLC antibody is available for research use only.



Description

Glutamate-cysteine ligase, also known as gamma-glutamylcysteine synthetase is the first rate-limiting enzyme of glutathione synthesis. The enzyme consists of two subunits, a heavy catalytic subunit and a light regulatory subunit. This locus encodes the catalytic subunit, while the regulatory subunit is derived from a different gene located on chromosome 1p22-p21. Mutations at this locus have been associated with hemolytic anemia due to deficiency of gamma-glutamylcysteine synthetase and susceptibility to myocardial infarction.

Researchers studying glutathione metabolism, antioxidant defense mechanisms, and oxidative stress signaling may also be interested in our [GCLC Antibody](#) page.

Application Notes

Titration of the GCLC antibody may be required due to differences in protocols and secondary/substrate sensitivity.

Immunogen

A portion of amino acids 286-315 from the human protein was used as the immunogen for this GCLC antibody.

Storage

Aliquot the GCLC antibody and store frozen at -20oC or colder. Avoid repeated freeze-thaw cycles.