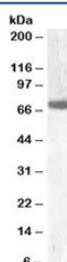


GCKR Antibody (R34615)

Catalog No.	Formulation	Size
R34615-100UG	0.5 mg/ml in 1X TBS, pH7.3, with 0.5% BSA (US sourced) and 0.02% sodium azide	100 ug

[Bulk quote request](#)

Availability	1-3 business days
Species Reactivity	Human, Mouse, Rat
Format	Antigen affinity purified
Host	Goat
Clonality	Polyclonal (goat origin)
Isotype	Goat Ig
Purity	Antigen affinity
Gene ID	2646
Applications	Western Blot : 0.1-0.3ug/ml ELISA (peptide) LOD : 1:8000
Limitations	This GCKR antibody is available for research use only.



Western blot testing of rat liver lysate with GCKR antibody at 0.1ug/ml. Predicted molecular weight ~69kDa.

Description

Additional name(s) for this target protein: Glucokinase regulator

Application Notes

Optimal dilution of the GCKR antibody should be determined by the researcher.

Immunogen

Amino acids KRFQHVETPEPGK were used as the immunogen for this GCKR antibody.

Storage

Aliquot and store the GCKR antibody at -20oC.